

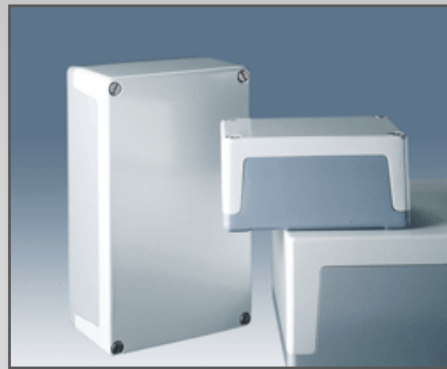


ROSE+BOPLA

A Phoenix Mecano Company

Alument

Diecast Aluminum Enclosure



For Finishing Services, Product Support, or to Order

Call 1-301-696-9800

NON-STOCKING PRODUCT—SUBJECT TO LARGE MINIMUM ORDER



Alument housings are constructed in rugged die-cast aluminum. Special advantages include: impact resistance, greater temperature resistance and unique “U” shaped lid/base

Alument Housings

design which simplifies electronic component installation and maintenance. Offered in three sizes, in either painted or unpainted versions. Standard painted color is light gray/blue gray. Four M4 screws assemble the housing from the bottom base. Optional front access lid screws can be used for wall mount applications. Rose+Bopla uses ALSi 12 copper free alloy with a copper content of .10 percent. The reduction in copper content increases the natural corrosion resistance properties of aluminum.

TECHNICAL DATA:

- Color: Powdercoated Version—Upper section Light Gray similar to RAL 7035. Lower section Blue Gray similar to RAL 7001. Unpainted Version—Bare Aluminum. Special colors are available. See paint specifications in the Technical Information Chapter.
- Material: Die-cast aluminum alloy, GD-AL Si 12 See Aluminum specification sheets in the Technical Information Chapter.
- Protection Classification: IP 40

Alument Housings—Painted					
Part Number	Length (Inches/mm)	Width (Inches/mm)	Height (Inches/mm)	Weight	Drawing Page #
AL 12	4.72 / 120	3.15 / 80	2.36 / 60	0.82 lbs	17-32
AL 20	7.87 / 200	4.72 / 120	2.95 / 75	1.85 lbs	17-32
AL 24	9.45 / 240	6.30 / 160	3.54 / 90	2.60 lbs	17-33

Alument Housings—Unpainted					
Part Number	Length (Inches/mm)	Width (Inches/mm)	Height (Inches/mm)	Weight	Drawing Page #
AL 12 U	4.72 / 120	3.15 / 80	2.36 / 60	0.82 lbs	17-32
AL 20 U	7.87 / 200	4.72 / 120	2.95 / 75	1.85 lbs	17-32
AL 24 U	9.45 / 240	6.30 / 160	3.54 / 90	2.60 lbs	17-33

Note: Dimensions are external. Metric is the primary dimension. Inch conversions and weights are for the user's convenience and are for reference only. Accessories shown on drawing page.

Alument

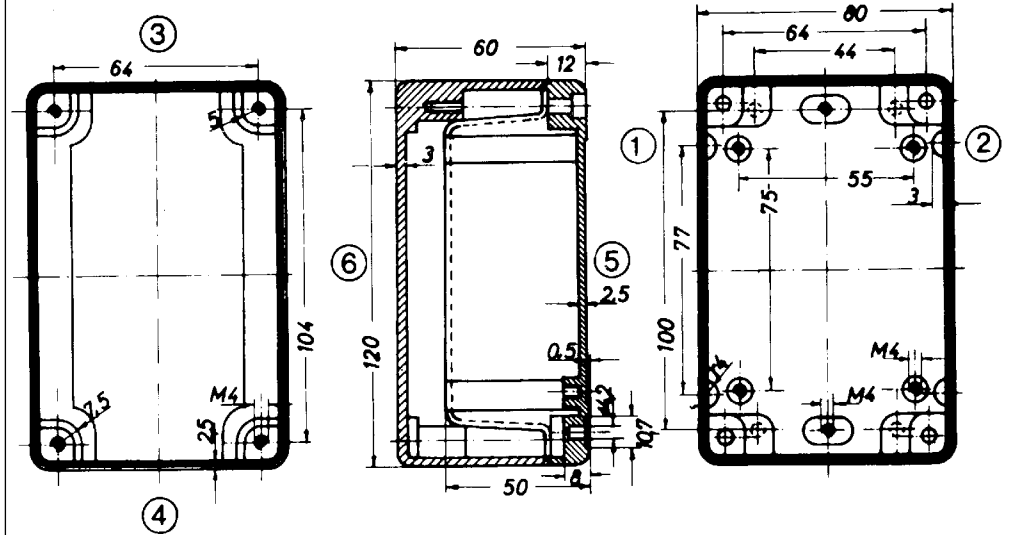
Alument (AL 12, 12 U)

External Dimensions: L 120 x W 80 x H 60 mm

Page 1-8

Accessories

- DO 12 AL Front Access lid screws (Set of 4).



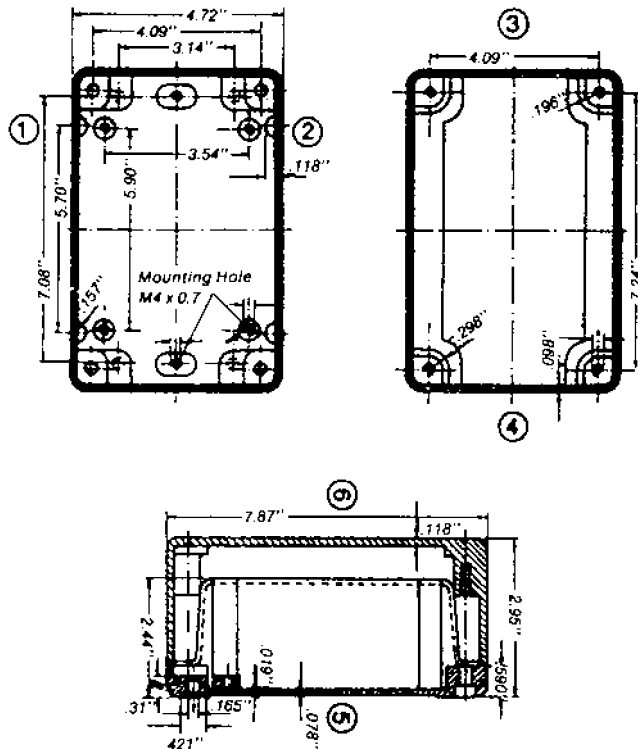
Alument (AL 20, AL 20 U)

External Dimensions: L 200 x W 120 x H 75 mm

Page 1-8

Accessories

- DO 20 AL Front Access lid screws (Set of 4).





Alument (AL 24, 24 U)

External Dimensions: L 240 x W 160 x H 90 mm

Accessories

- DO 24 AL Front Access lid screws (Set of 4).

