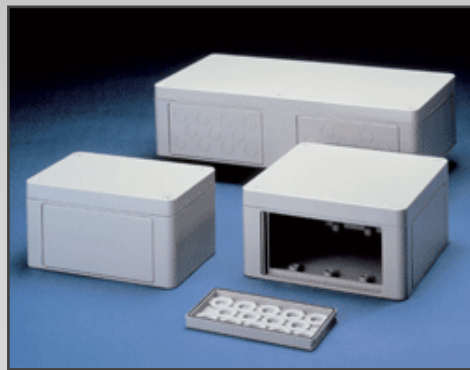


Fiberglass Modular Flange System

Industrial Watertight Flange Enclosures



For Finishing Services, Product Support, or to Order

Call 1-301-696-9800

Polyester Flange

Applications





Technical data

Material:

glass fibre reinforced polyester
transparent lid: polycarbonate

Colour:

similar to RAL 7032, pebble grey

Ingress protection:

IP 65 to EN 60529

Impact resistance:

>7 Joule, EN 50014

Flammability:

enclosure: V0 / self-extinguishing, UL 94
transparent lid: V2 / UL 94

Temperature range:

PUR (polyurethane) seal:	-40°C to +90°C
CR (chloroprene) seal:	-40°C to +100°C
VMQ (silicone) seal:	-60°C to +130°C

Insulation:

full protective insulation acc. to VDE 0100

Dielectric strength:

enclosure: 18 KV/mm / VDE 0303
transparent lid: >30 KV/mm / VDE 0303

Toxicity:

free of halogen

Surface resistance:

enclosure: >10¹² Ohm / VDE 0303
transparent lid: >10¹⁵ Ohm / VDE 0303

- Plastic enclosure with openings for flange fitting for automation technology
- Combination with other polyester flange enclosures possible
- Quick release feature

Included in delivery

Plastic enclosure of glass fibre reinforced polyester, consisting of lid, seal, quick release plastic screws, base with openings for flange fitting.

The flange plates are not included in the scope of delivery, they have to be ordered separately.

Set of threaded bushes (4 pcs.)

Polyester Flange

Programme range

Type	W x L x H (mm)	Flange openings	Mounting plate	Front plate on stud bolt	DIN rail* TS 35	Earthing rail	Silicone lid seal
14.01 00 00	170 x 270 x 135	2	14.00 00 11	14.00 00 27	10.06 17 21	10.06 21 01	10.05 15 01
14.02 00 00	270 x 270 x 135	4	14.00 00 12	14.00 00 28	10.06 17 22	10.06 21 01	10.05 15 02
14.03 00 00	270 x 540 x 135	6	14.00 00 13	14.00 00 29	10.06 17 23	10.06 21 02	10.05 15 03
Version with polycarbonate transparent lid							
14.01 00 01	170 x 270 x 150	2	14.00 00 11	14.00 00 27	10.06 17 21	10.06 21 01	10.05 15 01
14.02 00 01	270 x 270 x 150	4	14.00 00 12	14.00 00 28	10.06 17 22	10.06 21 01	10.05 15 02
14.03 00 01	270 x 540 x 150	6	14.00 00 13	14.00 00 29	10.06 17 23	10.06 21 02	10.05 15 03

* TS 32 on request

Flange and accessories (for all types)

Blind flange (for individual machining)	14.00 00 20	External mounting brackets (4 pcs.)	10.03 11 02
Threaded flange (17 x PG 11)	14.00 00 30	Threaded inserts (10 pcs.), additional	10.03 50 02
Threaded flange (14 x PG 13,5)	14.00 00 22	Silicone seal for flanges	10.05 14 02
Threaded flange (11 x PG 16)	14.00 00 21	Silicone seal for connection flange	10.05 14 03
Threaded flange (4 x PG 16; 2 x PG 21; 1 x PG 29)	14.00 00 23		
Connection flange	14.00 00 25		
Lid hinges (2 pcs.) retrofitting for all types	14.00 00 26		

Terminal mounting

	Phoenix											Earth conductor connections																					
DIN rail TS 35	X	X	X	X	X	X	X	X	X	X	X																						
Voltage (V)	500	800	800	800	800	800	800	1000	1000	1000																							
Current (A)	17	24	32	41	57	76	101	150	150	232																							
Nom. cross section (mm ²)	1.5	2.5	2.5	4	6	10	16	35	50	95																							
Terminal width (mm)	4.2	5.2	5.2	6.2	8.2	10.2	12.2	15.2	20	25																							
Terminal type																																	
Type	UK 1,5 N	UK 2,5 N	UK 3 N	UK 5 N	UK 6 N	UK 10 N	UK 16 N	UK 35	UKH 50	UKH 95																							
14.01 00 . .	55	45	45	37	28	23	19	15	11	9																							
14.02 00 . .	46*	37*	37*	31*	23*	19*	15*	12*	9*	7*																							
14.03 00 . .	110*	90*	90*	74*	56*	46*	38*	30*	22*	18*																							

* 2 DIN rails possible

	Weidmüller											Earth conductor connections																					
DIN rail TS 35	X	X	X	X	X	X	X	X	X	X																							
Voltage (V)	500	800	800	800	800	800	800	1000	1000	1000																							
Current (A)	17	24	32	41	57	76	101	150	150	232																							
Nom. cross section (mm ²)	1.5	2.5	2.5	4	6	10	16	35	50	95																							
Terminal width (mm)	4.2	5.2	5.2	6.2	8.2	10.2	12.2	15.2	20	25																							
Terminal type																																	
Type	WDU 2,5 N	WDU 2,5	WDU 4	WDU 6	WDU 10	WDU 16	WDU 35	WDU 70 N																									
14.01 00 . .	47	47	39	29	23	19	14	11																									
14.02 00 . .	39*	39*	32*	24*	19*	16*	12*	9																									
14.03 00 . .	93*	93*	77*	58*	46*	38*	29*	23*																									

* 2 DIN rails possible

Accessories



Blind flange
weight: 225 g

Order No.	version
14.00 00 20	without holes



Threaded flange
with pre-embossed PG holes
with metric pre-embossing on request

Order No.	version
14.00 00 30	17 x PG 11
14.00 00 22	14 x PG 13,5
14.00 00 21	11 x PG 16
14.00 00 23	4 x PG 16; 2 x PG 21; 1 x PG 29



Connection flange
to connect two polyester flange enclosures

Order No. **14.00 00 25**



Lid hinges
set = 2 pcs., retrofittable to all polyester flange enclosures

Order No. **14.00 00 26**

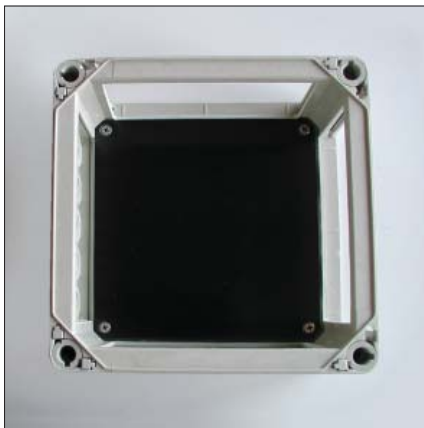
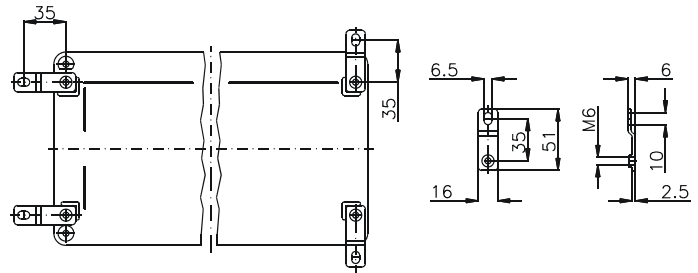
Polyester Flange

Accessories



External mounting brackets
set = 4 pcs.

Order No. **10.03 11 02**



Mounting plates
for fitting electro-mechanical components

Order No.	Type
14.00 00 11	14.01
14.00 00 12	14.02
14.00 00 13	14.03



Front plate
with stud bolts and fastening screws
(for dimensions, refer to mounting plate)

Order No.	Type
14.00 00 27	14.01
14.00 00 28	14.02
14.00 00 29	14.03

Type: **14.01 . .**

External dimensions: **170 x 270 x 135 mm**

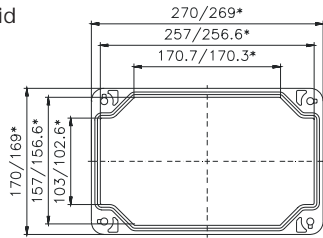
Weight: **1400 g**

DIN rail length in mm	max fitting length in mm	Mounting plate (thickness in mm)	External mounting bracket	Lid hinges	No. of flanges			
TS 15/35	240	3	•	•	2			
255	240	3	•	•	2			

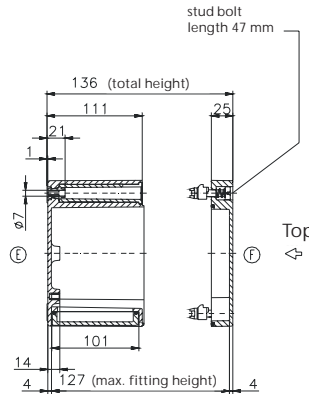
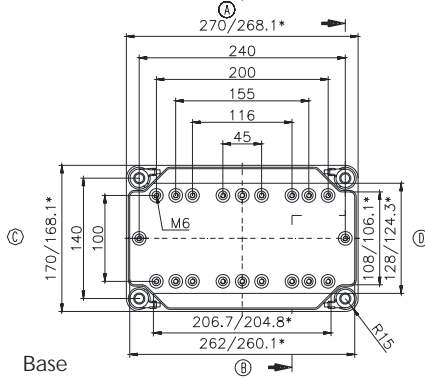
Maximum number of cable glands to *DIN 50262**

M	Corner dim.	Side		PG	Corner dim.	Side		
		A/B	C/D			A/B	C/D	
12	17.25	63	33	7	17.25	63	33	
16	25.30	28	16	9	21.85	38	20	
20	27.60	22	12	11	25.30	28	14	
25	37.95	12	6	13.5	27.60	22	12	
32	48.30	8	4	16	31.05	18	9	
40	60.95	3	2	21	37.95	11	6	
50	69.00	3	1	29	48.30	8	4	
63	74.75	2	1	36	60.95	3	2	
					42	69.00	3	1
					48	74.75	2	1

Lid



* = Conical form tapering downwards
Free dimensions-tolerance to DIN 16901 - 130



Type: **14.02 . .**

External dimensions: **270 x 270 x 135 mm**

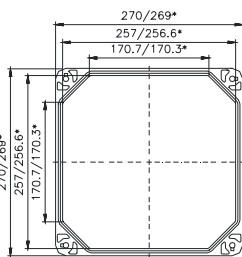
Weight: **2200 g**

DIN rail length in mm	max fitting length in mm	Mounting plate (thickness in mm)	External mounting brackets	Lid hinges	No. of flanges			
TS 15/35	200	3	•	•	4			
215	200	3	•	•	4			

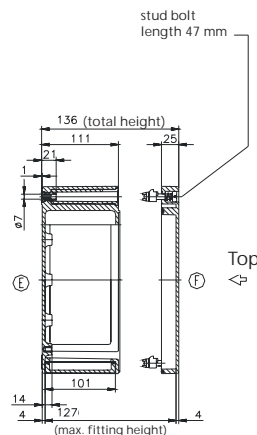
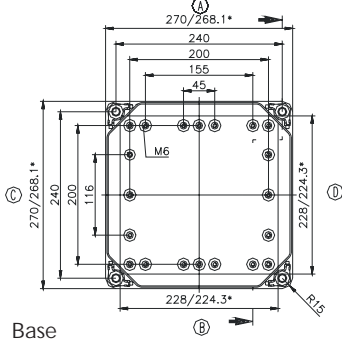
Maximum number of cable glands to *DIN 50262**

M	Corner dim.	Side		PG	Corner dim.	Side		
		A/B	C/D			A/B	C/D	
12	17.25	63	63	7	17.25	63	63	
16	25.30	28	28	9	21.85	38	38	
20	27.60	22	22	11	25.30	28	28	
25	37.95	12	12	13.5	27.60	22	22	
32	48.30	8	8	16	31.05	18	18	
40	60.95	3	3	21	37.95	11	11	
50	69.00	3	3	29	48.30	8	8	
63	74.75	2	2	36	60.95	3	3	
					42	69.00	3	3
					48	74.75	2	2

Lid



* = Conical form tapering downwards
Free dimensions-tolerance to DIN 16901 - 130



Type: **14.03 . .**

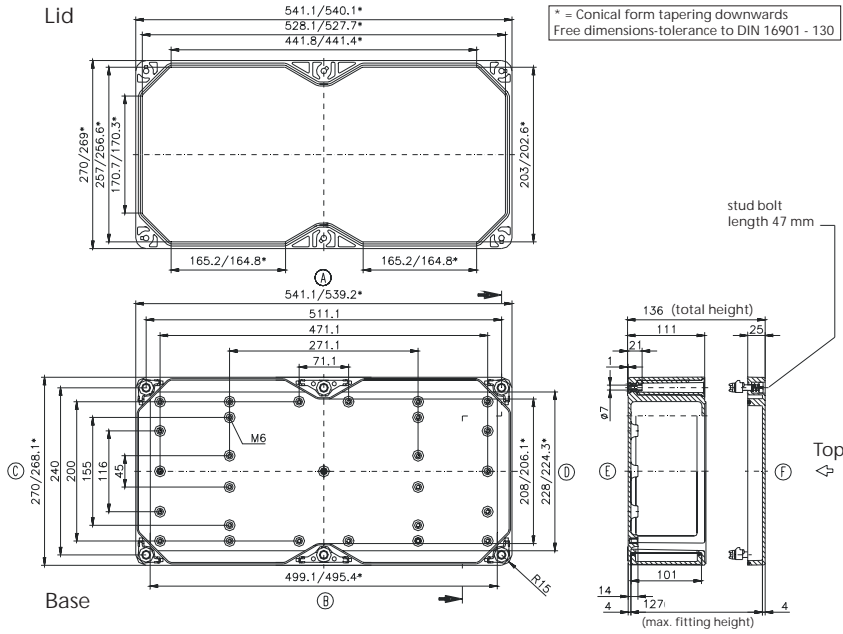
External dimensions: **270 x 540 x 135 mm**

Weight: **4000 g**

DIN rail length in mm	max. fitting length in mm	Mounting plate (thickness in mm)	External mounting brackets	Lid hinges	No. of flanges			
TS 15/35	470	3	•	•	6			
485	470	3	•	•	6			

Maximum number of cable glands to *DIN 50262**

M	Corner dim.	Side		PG	Corner dim.	Side	
		A* / B*	C / D			A* / B*	C / D
12	17.25	63	126	7	17.25	63	126
16	25.30	28	56	9	21.85	38	76
20	27.60	22	44	11	25.30	28	56
25	37.95	12	24	13.5	27.60	22	44
32	48.30	8	16	16	31.05	18	36
40	60.95	3	6	21	37.95	11	22
50	69.00	3	6	29	48.30	8	16
63	74.75	2	4	36	60.95	3	6
				42	69.00	3	6
				48	74.75	2	4



* per flange