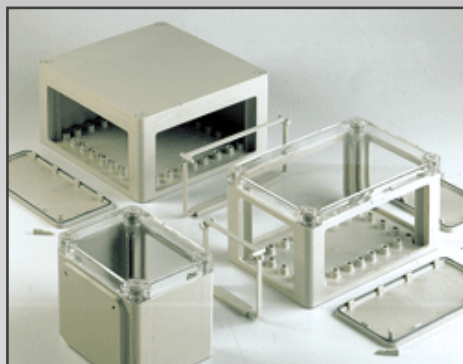


# Polycarbonate Flange 1700

Modular Flange Enclosure System



For Finishing Services, Product Support, or to Order

Call 1-301-696-9800



- Light-weight plastic enclosures for industrial applications with pre-embossed flanges
- Can be combined with other polycarbonate flange enclosures
- Quick release feature with flange quick release system
- Standard and transparent lid options

### Included in delivery

Completely closed enclosure body with pre-embossed flanges to break out, lid with plastic quick release feature; 4 threaded inserts for internal fastening

### Technical data

**Material:**

Polycarbonate

**Colour:**

pebble grey, similar to RAL 7032

**Ingress protection:**

IP 65 to EN 60529

**Impact resistance:**

>7 Joule, EN 50014

**Flammability:**

enclosure: V0 / self-extinguishing, UL 94

transparent lid: V2 / UL 94

**Temperature range:**

enclosure: -40°C to +100°C

transparent lid: -40°C to +100°C

**Insulation:**

full protective insulation acc. to VDE 0100

**Dielectric strength:**

enclosure: >18 KV/mm, DIN 53481

transparent lid: >30 KV/mm, DIN 53481

**Toxicity:**

low halogen

**Surface resistance:**

enclosure: >10<sup>15</sup> Ohm, DIN 53481

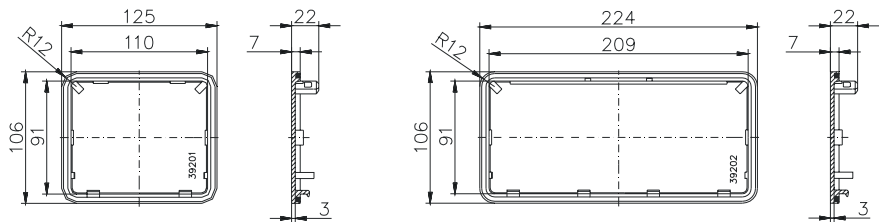


## Accessories



**Blind flange**

Order No.	version
<b>17.00 31 00</b>	Blind flange I (125 x 106 mm)
<b>17.00 32 00</b>	Blind flange II (224 x 106 mm)



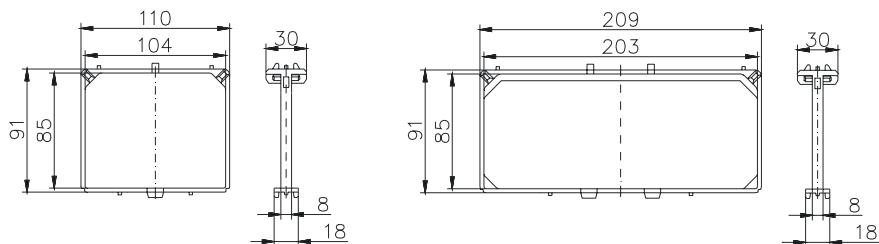
**Threaded flange  
with pre-embossed holes**

Order No.	version
<b>17.00 34 00</b>	19 x PG 9 / PG 13,5
<b>17.00 35 00</b>	16 x PG 11 / PG 16
<b>17.00 33 00</b>	10 x PG 9 / PG 13,5; 4 x PG 11 / PG 16; 2 x PG 21 / PG 29



**Connection flange**  
to connect two polycarbonate flange enclosures with itself

Order No.	version
<b>17.00 36 00</b>	Connection flange I
<b>17.00 37 00</b>	Connection flange II



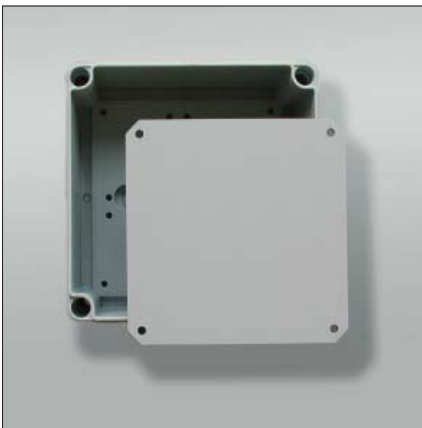
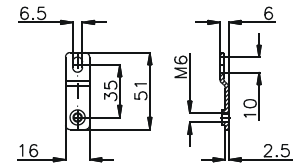
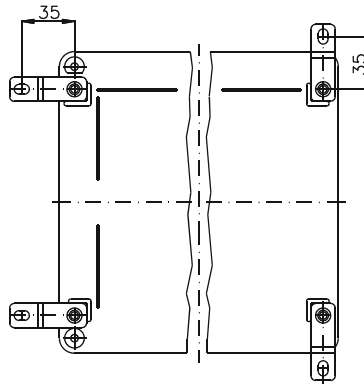
# Polycarbonate Flange

## Accessories



**External mounting brackets**  
set = 4 pcs.

Order No. **10.03 11 04**



**Mounting plates**  
for fitting electro-mechanical components



**Mounting bracket**  
set = 4 pcs.

Order No. **17.00 42 00**

Type: **17.01 10..**

External dimensions: **134 x 170 x 130 mm**

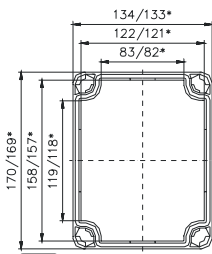
Weight: **790 g**

DIN rail length in mm	max. fitting length in mm	Mounting plate (thickness in mm)	External mounting brackets	Hinged lid	No. of flanges			
TS 35								
140	115	3	•	•	2			

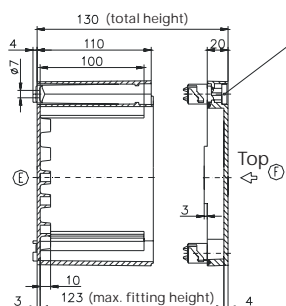
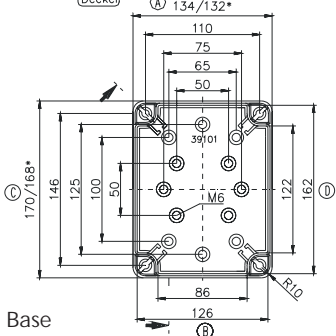
Maximum number of cable glands to **50262\***

M	Corner dim.	Side		PG	Corner dim.	Side		
		A/B	C/D			A/B	C/D	
12	17,25	16	27	7	17,25	16	27	
16	25,30	8	12	9	21,85	12	16	
20	27,60	6	10	11	25,30	8	12	
25	37,95	3	5	13,5	27,60	6	10	
32	48,30	2	4	16	31,05	4	9	
40	60,95	1	2	21	37,95	3	5	
50	69,00	1	1	29	48,30	2	4	
63	74,75	0	1	36	60,95	1	1	
					42	69,00	1	1
					48	74,75	0	1

Lid



\* = Conical form tapering downwards  
Free dimensions-tolerance to DIN 16901 - 130



Base

Type: **17.02 10..**

External dimensions: **170 x 170 x 130 mm**

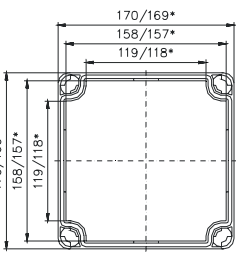
Weight: **910 g**

DIN rail length in mm	max. fitting length in mm	Mounting plate (thickness in mm)	External mounting brackets	Hinged lid	No. of flanges			
TS 35								
140	115	3	•	•	4			

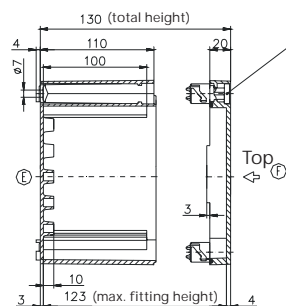
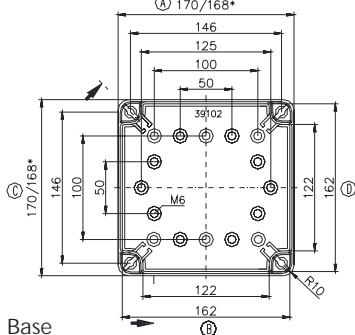
Maximum number of cable glands to **50262\***

M	Corner dim.	Side		PG	Corner dim.	Side		
		A/B	C/D			A/B	C/D	
12	17,25	27	27	7	17,25	27	27	
16	25,30	12	12	9	21,85	16	16	
20	27,60	10	10	11	25,30	12	12	
25	37,95	5	5	13,5	27,60	10	10	
32	48,30	4	4	16	31,05	9	9	
40	60,95	2	2	21	37,95	5	5	
50	69,00	1	1	29	48,30	4	4	
63	74,75	1	1	36	60,95	1	1	
					42	69,00	1	1
					48	74,75	1	1

Lid



\* = Conical form tapering downwards  
Free dimensions-tolerance to DIN 16901 - 130



Base

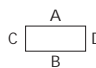
Type: **17.03 10..**

External dimensions: **170 x 269 x 130 mm**

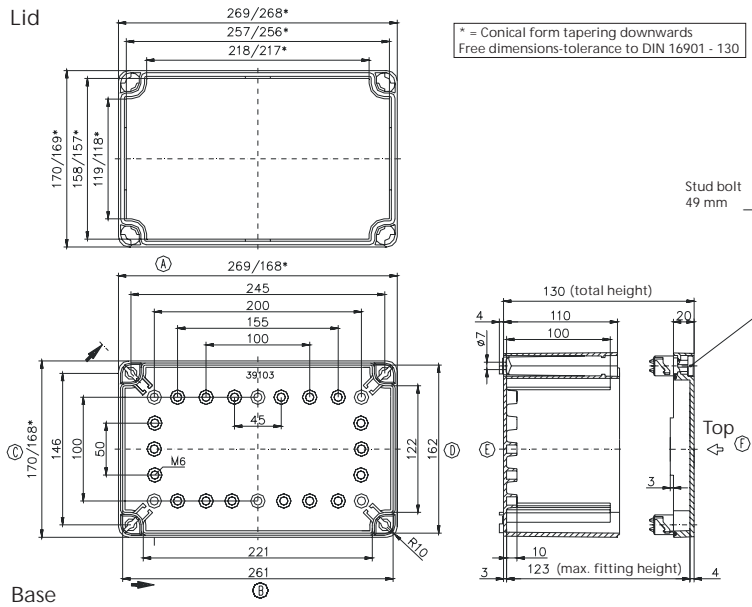
Weight: **1210 g**

DIN rail length in mm	max. fitting length in mm	Mounting plate (thickness in mm)	External mounting brackets	Hinged lid	No. of flanges			
TS 35								
215	190	3	•	•	4			

Maximum number of cable glands to **50262\***



M	Corner dim.	Side		PG	Corner dim.	Side		
		A/B	C*/D*			A/B	C*/D*	
12	17,25	60	27	7	17,25	60	27	
16	25,30	28	12	9	21,85	35	16	
20	27,60	21	10	11	25,30	28	12	
25	37,95	12	5	13,5	27,60	21	10	
32	48,30	8	4	16	31,05	18	9	
40	60,95	4	2	21	37,95	11	5	
50	69,00	3	1	29	48,30	8	4	
63	74,75	2	1	36	60,95	3	1	
					42	69,00	3	1
					48	74,75	2	1



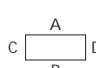
Type: **17.04 10..**

External dimensions: **269 x 269 x 130 mm**

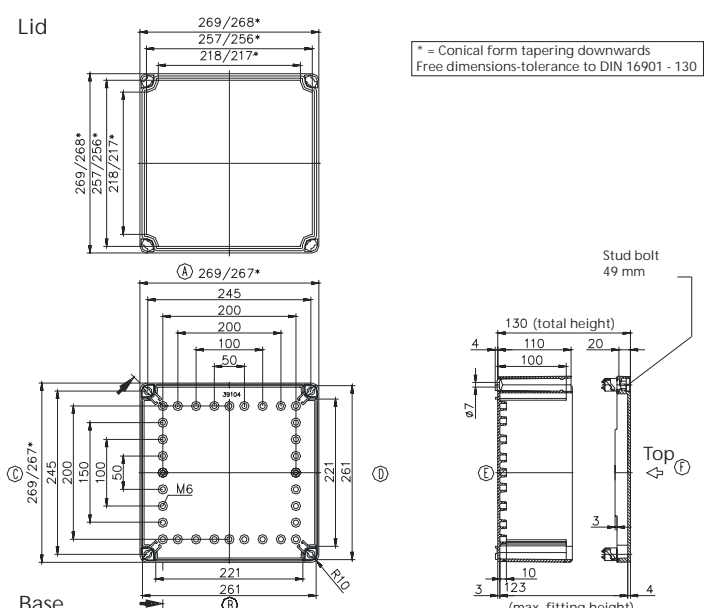
Weight: **1710 g**

DIN rail length in mm	max. fitting length in mm	Mounting plate (thickness in mm)	External mounting brackets	Hinged lid	No. of flanges			
TS 35								
215	190	3	•	•	4			

Maximum number of cable glands to **50262\***



M	Corner dim.	Side		PG	Corner dim.	Side		
		A/B	C/D			A/B	C/D	
12	17,25	60	60	7	17,25	60	60	
16	25,30	28	28	9	21,85	35	35	
20	27,60	21	21	11	25,30	28	28	
25	37,95	12	12	13,5	27,60	21	21	
32	48,30	8	8	16	31,05	18	18	
40	60,95	4	4	21	37,95	11	11	
50	69,00	3	3	29	48,30	8	8	
63	74,75	2	2	36	60,95	3	3	
					42	69,00	3	3
					48	74,75	2	2



Type: **17.05 10 . .**

External dimensions: **269 x 540 x 130 mm**

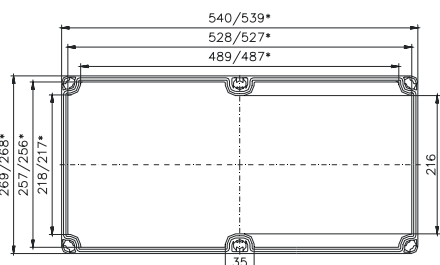
Weight: **3040 g**

DIN rail length in mm	max. fitting length in mm	Mounting plate (thickness in mm)	External mounting brackets	Hinged lid	No. of flanges			
TS 35								
485	450	3	•	•	6			

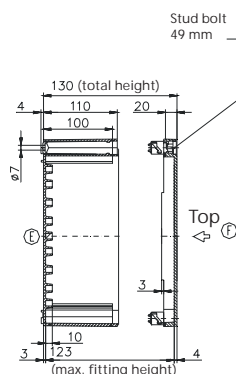
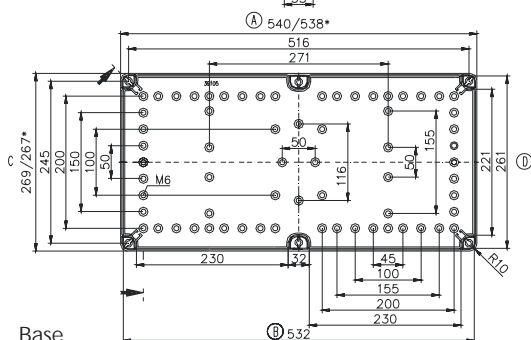
Maximum number of cable glands to **50262\***

M	Corner dim.	Side		PG	Corner dim.	Side	
		A/B	C/D			A/B	C/D
12	17,25	120	60	7	17,25	120	60
16	25,30	54	28	9	21,85	70	35
20	27,60	42	21	11	25,30	56	28
25	37,95	24	12	13,5	27,60	42	21
32	48,30	16	8	16	31,05	36	18
40	60,95	8	4	21	37,95	22	11
50	69,00	6	3	29	48,30	16	8
63	74,75	4	2	36	60,95	6	3
				42	69,00	6	3
				48	74,75	4	2

Lid



\* = Conical form tapering downwards  
Free dimensions-tolerance to DIN 16901 - 130



Base

Type: **17.06 10 . .**

External dimensions: **269 x 440 x 130 mm**

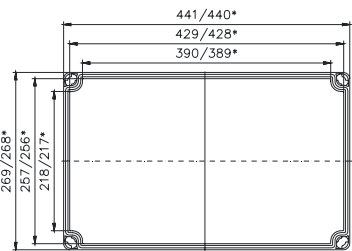
Weight: **2480 g**

DIN rail length in mm	max. fitting length in mm	Mounting plate (thickness in mm)	External mounting brackets	Hinged lid	No. of flanges			
TS 35								
385	350	3	•	•	4			

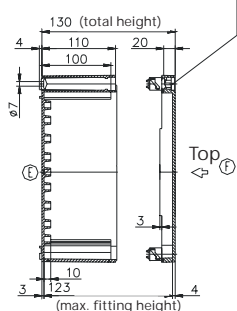
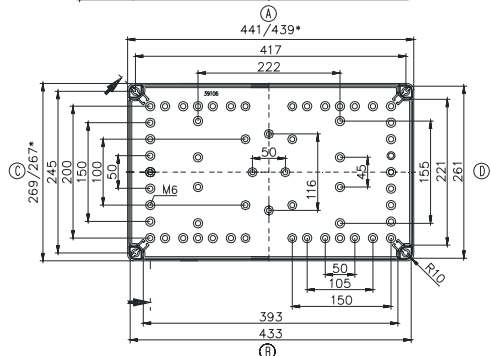
Maximum number of cable glands to **50262\***

M	Corner dim.	Side		PG	Corner dim.	Side	
		A/B	C/D			A/B	C/D
12	17,25	60	60	7	17,25	60	60
16	25,30	28	28	9	21,85	35	35
20	27,60	21	21	11	25,30	28	28
25	37,95	12	12	13,5	27,60	21	21
32	48,30	8	8	16	31,05	18	18
40	60,95	4	4	21	37,95	11	11
50	69,00	3	3	29	48,30	8	8
63	74,75	2	2	36	60,95	3	3
				42	69,00	3	3
				48	74,75	2	2

Lid



\* = Conical form tapering downwards  
Free dimensions-tolerance to DIN 16901 - 130



Base