

# Mobile Control Units 2921

## Industrial Handheld Enclosure Series



For Finishing Services, Product Support, or to Order

Call 1-301-696-9800



- Polyamide hand enclosure for automation and control engineering
- Version with handle and integrated cable exit
- Large fitting space

### Technical data

**Material:**

polyamide

front plate: polystyrol

**Ingress protection:**

IP 65 to EN 60529

**Impact resistance:**

7 Joule to EN 60079-0

**Flammability:**

HB / UL 94

**Colour:**

RAL 1021, rape yellow

**Temperature range:**

-40°C to +60°C

### Included in delivery

Enclosure with handle, including cable gland M 20 x 1.5, front panel, enclosure and front panel screws, and wall holder

# Pilot 110 - 150

## Programme range

Enclosure type	Order No.	Encl. dimensions incl. handle W x L x H (mm)	Front panel dimensions W x H (mm)	Mounting depth (mm)
Pilot 110	29.21 10 00	85 x 85 x 191	77 x 77	63,5
Pilot 120	29.21 20 00	115 x 85 x 191	107 x 77	63,5
Pilot 130	29.21 30 00	85 x 85 x 221	77 x 107	63,5
Pilot 140	29.21 40 00	160 x 85 x 211	152 x 97	63,5
Pilot 150	29.21 50 00	105 x 85 x 266	97 x 152	63,5

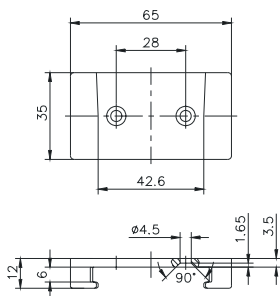
## Accessories

Magnetic holder (for Pilot 120 - 150)	29.00 00 80
Push button and switches see page 53 - 58	on request



### Electromechanical components

On request, we can supply equipment fitted with electro-mechanical components such as emergency stop button, acknowledge keys, hand wheel, switches, display



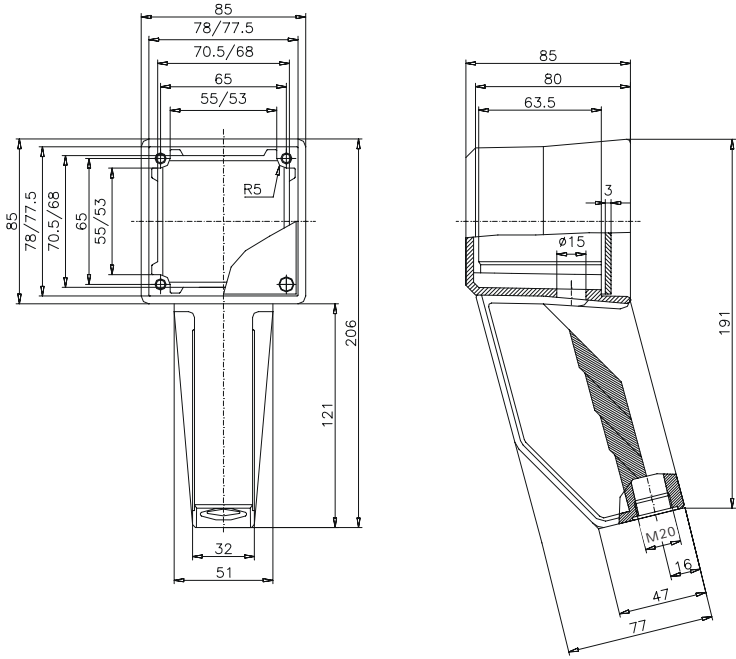
### Wall holder

included in delivery

Dimensions

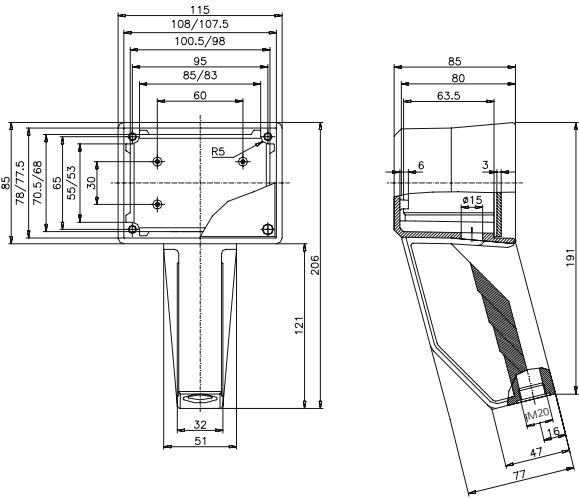


Type	Order No.	Weight (kg)
Pilot 110	29.21 10 00	0.500



Type	Order No.	Weight (kg)
Pilot 120	29.21 20 00	0.500
Pilot 130	29.21 30 00	0.500

Pilot 120



Pilot 130

