



ROSE+BOPLA
ENCLOSURES

A PHOENIX MECANO COMPANY

**Mobile Control Units
2930, 2940, 2950
Handheld Enclosures
Product Drawings
Last Updated 6/20/2008**

Rose+Bopla Enclosures
7330 Executive Way
Frederick, MD 21704
301-696-9800
www.rose-bopla.com
rbinfo@pm-usa.com

Dimensional Drawings

For Secondary Services, Product Support, or To Order, Call 1-301-696-9800



Rose+Bopla offers handheld control units to suit a variety of applications. Often in mechanical and control engineering, mobile one-handed or two-handed operating control units are used for

Mobile Control Units

installation and operation. Our smallest unit, the 2940, is designed as a single push-button control unit. It is ideal for panic button controls in production line manufacturing situations. It can be mounted at a master console, or at additional work stations with extra wall-mount brackets. The black polyester front panel is removable. The 2930 is identical to the 2940 except for the larger sized head on the 2930. Both units are injection molded in yellow glass-filled Polyamide.

The 2950 is the largest, designed as a multi-button control station. Up to 10 push buttons or switches can be built in, depending on the size and application. This unit features a built-in left-hand handle and cord wrap. The front anodized aluminum front panel is removable for machining and labeling and attaches to the enclosure with a stick-on adhesive decal. The 2950 is constructed of yellow compression-molded reinforced fiberglass. The 2950 is shock-proof and impervious to most industrial acids, chemicals and ultraviolet rays.

All units come with removable front panels, Neoprene gasket, wall-mount brackets, screws and a power cord cable grip. These units already have a pre-threaded hole for the cable grip in the bottom. If the grip is not required, it may be filled with a Rose hole plug. The 2940 and 2930 units come with a M20 cable grip. The 2950 units come with a M25 cable grip. Cable grips are designed to give bending protection and strain relief.

TECHNICAL DATA 2930/2940:

- Body material: glass-filled Polyamide
- Cable gland material: Polyamide
- Front panel material: black Polyester
- Body color: yellow, similar to RAL 1021
- Ingress Protection: IP 65 to EN 60529, NEMA 12
- Impact resistance: > 7 Nm, EN 50014
- Gasket material: stamped foam rubber gasket
- Temperature resistance: -40°F to +140°F

TECHNICAL DATA 2950:

- Body material: Fiberglass
- Cable gland material: Polyamide
- Front panel material: bright anodized aluminum plate with adhesive film
- Body color: yellow, similar to RAL 1021
- Protection classification: NEMA 4X; IP 66, EN 60529
- Impact resistance: > 7 Nm, EN 50014
- Gasket material: round Neoprene gasket
- Temperature resistance: -13°F to +194°F

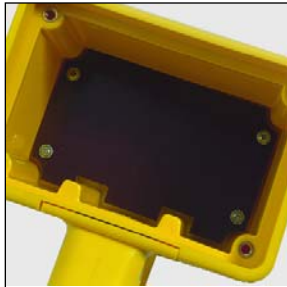
Mobile Control Units 2930, 2940, 2950					
Part Number	Length (Inches/mm)	Width (Inches/mm)	Height (Inches/mm)	Weight	Drawing
29300100	7.87 / 200	4.53 / 115	3.66 / 93	.70 lbs	17-118
29400200	7.48 / 190	2.75 / 70	3.66 / 93	.59 lbs	17-118
29500100	11.61 / 295	6.46 / 164	4.57 / 116	3.52 lbs	17-119

Note: Dimensions are external. Metric is the primary dimension. Inch conversions are for the user's convenience and are for reference only. Accessories shown on drawing page.



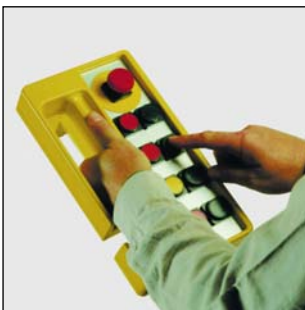
◀ Control Units 2930 and 2940 are designed for one and two button control devices.

▶ Integrated handles on the 2930 and 2940 Control Units are designed for use with wall-mount brackets below



◀ Phenolic mounting plate is available for Control Unit 2930

▶ Wall-mount brackets are designed for use with Control Units 2930, 2940, and 2950



▶ Control Unit 2950 is ideal for multi-button enclosure applications.



Control Units 2930 (left) and 2940: Each enclosure consists of a one-piece glass-filled polyamide enclosure body, polyester round-cornered front panel with screws, stamped foam rubber gasket, wall-mount bracket, and M20 cable grip. Power cord cable grips are designed to offer bending protection and strain relief.



Control Units 2950: Each enclosure consists of a reinforced fiber-glass enclosure lid and base, self-adhesive bright anodized aluminum front plate, round Neoprene gasket, wall-mount brackets, and M25 cable grip. Power cord cable grips are designed to offer bending protection and strain relief.

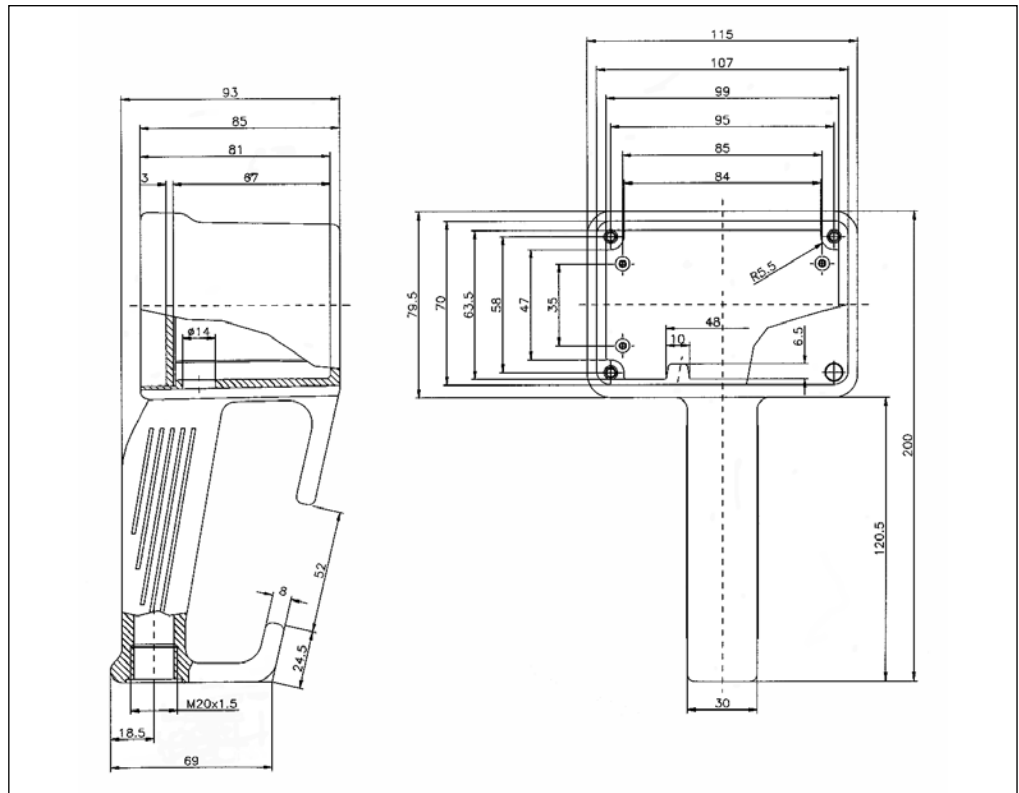
Control Units

29300100

External Dimensions: L200 x W115 x H93 mm

Page 4-12, 13

Standard Features
<ul style="list-style-type: none"> • 29300100 Enclosure body with integrated handle, cable gland M20, front panel with screws, stamped Neoprene gasket, and wall mount bracket.
Accessories
<ul style="list-style-type: none"> • 29310000 Mounting plate. • 29600100 Extra external wall mounting bracket • 08100120 Extra cable grip with strain protection M20. • 10095100 Front plate.

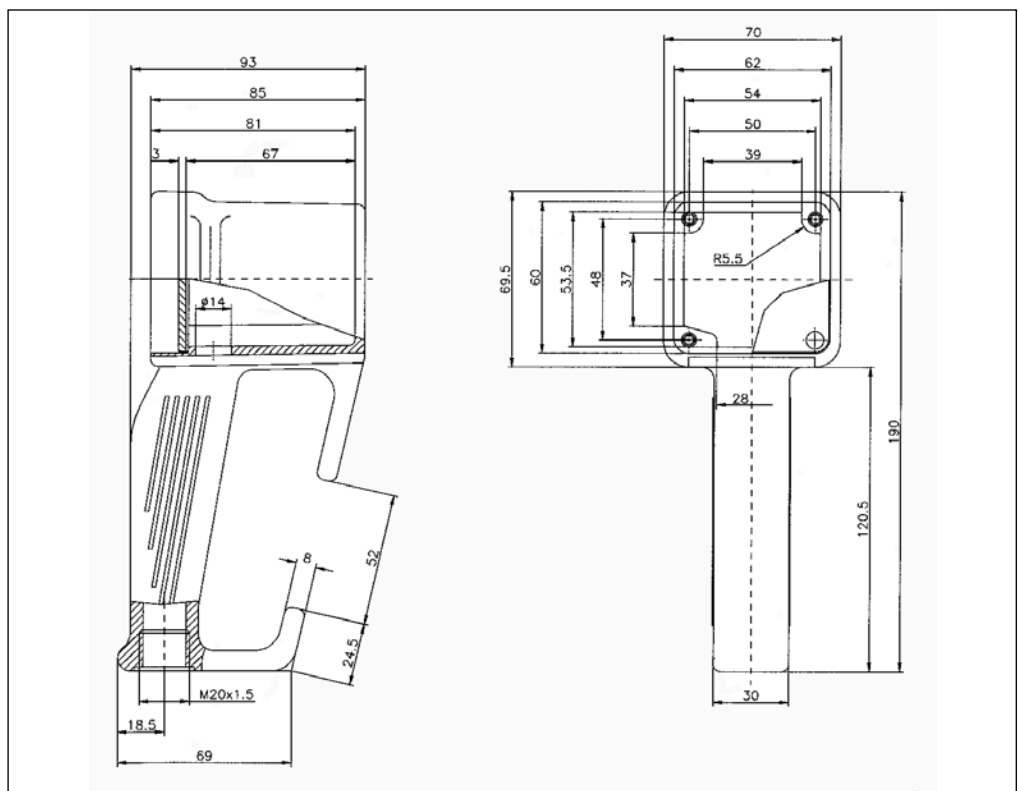


29400200

External Dimensions: L190 x W70 x H93 mm

Page 4-12, 13

Standard Features
<ul style="list-style-type: none"> • 29400200 Enclosure body with integrated handle, cable gland M20, front panel with screws, stamped Neoprene gasket, and wall mount bracket.
Accessories
<ul style="list-style-type: none"> • 29600100 Extra external wall mounting bracket. • 08100120 Extra cable grip with strain protection M20. • 10095097 Front plate.





29500100

External Dimensions: L295 x W164 x H116 mm

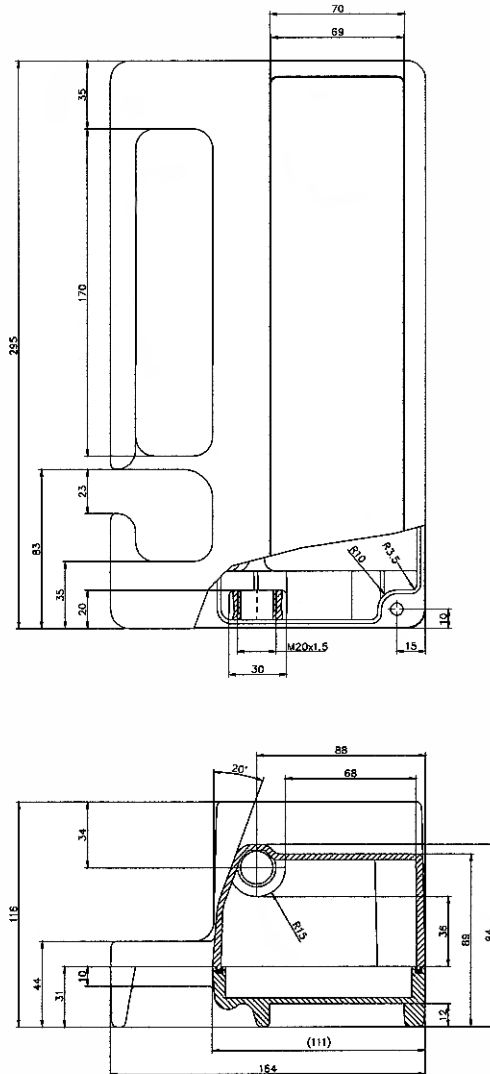
Page 4-12, 13

Standard Features

- **29500100** Base, lid, self-adhesive front panel, round Neoprene gasket, cable gland M25 and two wall mount brackets.

Accessories

- **29600100** External Wall mounting bracket and screws (set of 2)
- **08100120** Extra power cable grip M20.
- **10095095** Front plate.



Dimensional Drawings