



**ROSE+BOPLA**  
ENCLOSURES

A PHOENIX MECANO COMPANY

# **GFK Fiberglass Mini Cabinet Enclosures Product Drawings Last Updated 4/10/2006**

Rose+Bopla Enclosures  
7330 Executive Way  
Frederick, MD 21704  
301-696-9800  
[www.rose-bopla.com](http://www.rose-bopla.com)  
[customerservice@rose-bopla.com](mailto:customerservice@rose-bopla.com)

*For Secondary Services, Product Support, or To Order, Call 1-301-696-9800*





# Cabinet Enclosures

The Rose+Bopla GFK Fiberglass Mini Cabinets are made of injection-molded granular GFK fiberglass and are light gray in color. Granular fiberglass is an injectable polyester fiberglass

## GFK Fiberglass Mini Cabinets

material made up of plastic pellets reinforced with fiberglass fibers. When injected, this material offers flexibility, reinforced strength and the ability to withstand hostile manufacturing and chemical environments.

Two sizes of GFK cabinets are available in two options: one with a standard opaque door, and one with a double layer safety glass viewing window in the door. They offer a less expensive design choice than our compression-molded fiberglass cabinets.

GFK Fiberglass Mini Cabinets are used for brewery processing controllers, and oil field gas monitor housings, to name a few.

Each cabinet includes a base and lid, stainless steel hinge pins, stainless steel mounting plate inserts and external brackets, non-removable neoprene gasket. Alternate glass window versions are available. Screw inserts, locks, handles, keys, mounting plates, and aluminum front plates are optional and must be ordered separately.



GFK Fiberglass Watertight Mini Cabinets 2025 & 2530					
Part #	Length (Inches/mm)	Width (Inches/mm)	Height (Inches/mm)	Weight LBS.	Drawing Page #
21202500 00	9.84 / 250	7.87 / 200	5.91 / 150	1.98 lbs.	17-271
21253000 00	11.81 / 300	9.84 / 250	6.69 / 170	3.85 lbs.	17-271
22202500 00	9.84 / 250	7.87 / 200	5.91 / 150	1.98 lbs.	17-271
22253000 00	11.81 / 300	9.84 / 250	6.69 / 170	3.85 lbs.	17-271

Note: Dimensions are external. Metric is the primary dimension. Inch conversions are for the user's convenience and are for reference only. Accessories shown on drawing page.

### TECHNICAL DATA:

- Color: Light gray, similar to RAL 7032. Special colors on request. Minimum quantity may be required.
- Material:  
Enclosure—Injection-molded glassfiber reinforced polyester  
Gasket—Neoprene
- Ingress Protection: IP65 to EN 60529  
NEMA 12
- Temperature range: -67°F up to +194°F  
with window: -67°F up to +176°F
- Surface resistance:  $4 \times 10^{15}$  Ohm to DIN 53482
- Flammability: UL 94 VO/self-extinguishing
- Disruptive strength: 26KV/mm to DIN 53481
- Toxicity: Halogen-free



◀ GFK Fiberglass  
Watertight Cabinet  
featuring a front plate  
attached on the inside.



# Cabinet Enclosures

**Standard Features**

2050 / 2530 ABS Mini-Cabinets include: base and lid, stainless steel hinge pins, brass mounting boss inserts, neoprene gasket.

- 21202590 00 Cabinet with opaque door.
- 21253090 00 Cabinet with opaque door.
- 22202590 00 Cabinet with transparent door.
- 22253090 00 Cabinet with transparent door.

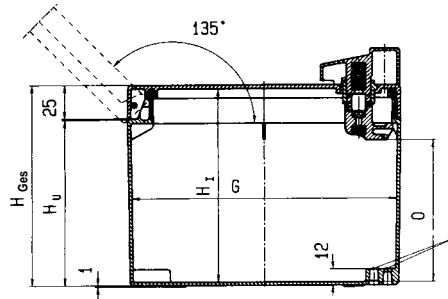
2050 / 2530 GFK Fiberglass Mini-Cabinets include: base and lid\*, stainless steel hinge pins, stainless steel mounting plate inserts, external brackets, and non-removable neoprene gaskets.

\*Alternate double layer safety glass window.

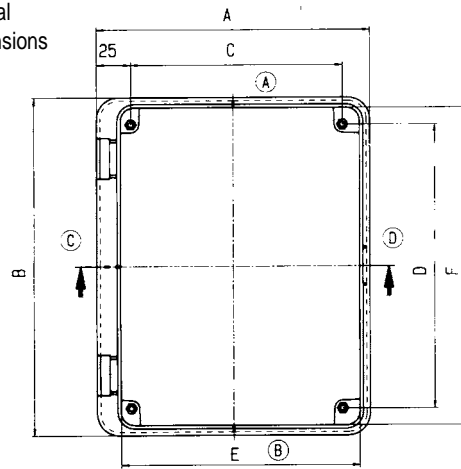
- 21202500 00 Cabinet with opaque door.
- 21253000 00 Cabinet with opaque door.
- 22202500 00 Cabinet features door with glass window.
- 22253000 00 Cabinet features door with glass window.

**Accessories**

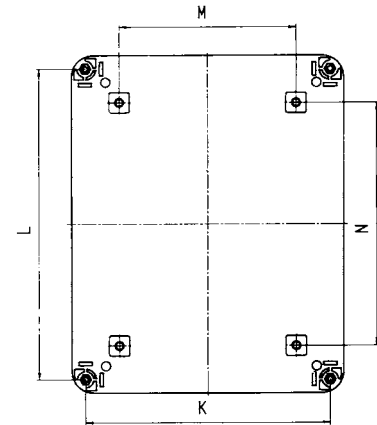
- 21620001 00 Door handle.
- 21620002 00 Locking door handle with key.
- 21620003 00 Flush triangular door lock.
- 21620004 00 Flush square door lock.
- 10094325 00 Triangular metal key.
- 10094326 00 Square metal key.
- 10089040 00 Internal phenolic mounting plate for 2025.
- 10089041 00 Internal phenolic mounting plate for 2530.
- 10095320 00 Aluminum face plate with stud bolts for 2025.
- 10095321 00 Aluminum face plate with stud bolts for 2530.
- 10052010 00 Wall mount brackets (set of 4).
- 10051059 00 Mounting plate screws with washers (set of 4) M5 x 8 mm x .8 pitch.



Internal Dimensions

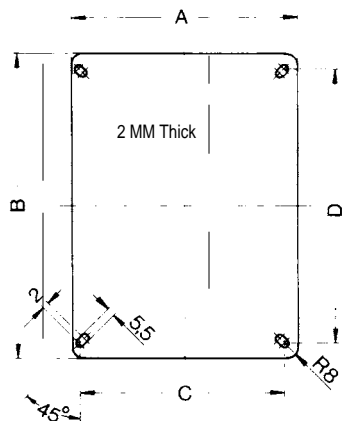


ReacWall



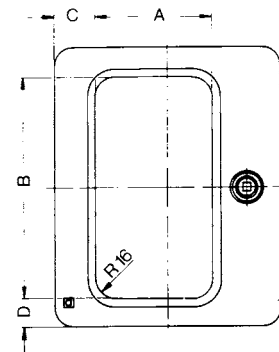
Part #	A	B	C	D	E	F	G	K	L	M	N	O	H <sub>i</sub>	H <sub>u</sub>	H <sub>Gas</sub>
21 / 22202500 00	199.0	248.5	154	209	174.5	236.5	193.0	179.0	229.2	129.4	179.0	100.1	145	121	149
21 / 22253000 00	248.5	298.0	204	259	222.5	284.0	242.5	228.1	227.5	179.5	228.8	119.7	165	141	166
21 / 22202590 00	199.0	248.5	154	209	174.5	236.5	193.0	179.0	229.2	129.4	179.0	100.1	145	121	149
21 / 22253090 00	248.5	298.0	204	259	222.5	284.0	242.5	228.1	227.5	179.5	228.8	119.7	165	141	166

**Mounting Plates**  
Internal Front Plates



Part #	A	B	C	D
10089040 00	200	250	155	210
10089041 00	250	300	205	260

**Window - GRP Version**



Part #	A	B	C	D
22202500 00	100	192	38	29
22253000 00	145	242	43	29

Dimensional Drawings