

CombiNorm Compact

Modular DIN Rail Enclosure



For Finishing Services, Product Support, or to Order

Call 1-301-696-9800

CombiNorm-Compact



A combination of an enclosure shell and an enclosure lid of your choice, this top hat rail enclosure made of flame-resistant polyamide UL 94 V0 guarantees optimal PCB utilization because the unit PCB is inserted from the side.

The orthogonal shape of the soldering pins makes it possible to mount the terminals with the components in one soldering process!

The enclosure shells are available with/without a terminal trim or air vents, the enclosure lids with/without terminal trim. Thanks to the special snap trim, the latching of the shell and lid can take place on automated machines. The patented rail snap foot on the enclosure shells is in a "parked" position when open; it releases automatically when placed on the rail and locks the enclosure.

Enclosure material: Polyamide 6.6 – FR;
front flap clear;

polycarbonate.
For technical data
see pages 646-650.

Colour: Light grey, similar
to RAL 7035.
Special colours and
min. order quanti-
ties on request.

Scope of delivery: Enclosure shell resp.
enclosure lid;
PU = 5 pcs.

Ingress protection: IP 40/DIN EN 60529
for complete
enclosure without
ventilation;
IP 30/DIN EN 60529
for complete en-
closure with ventila-
tion; terminals IP 20/
DIN EN 60529.

Accessories (additional charge):

CN...FP: Front panel, plug-in

CN...FK: Front flap, snap-on

CN...FKG: Front flap, clear, snap-on

AK...: Connection terminals

AK-BS: Terminal identification strip,
self-adhesive

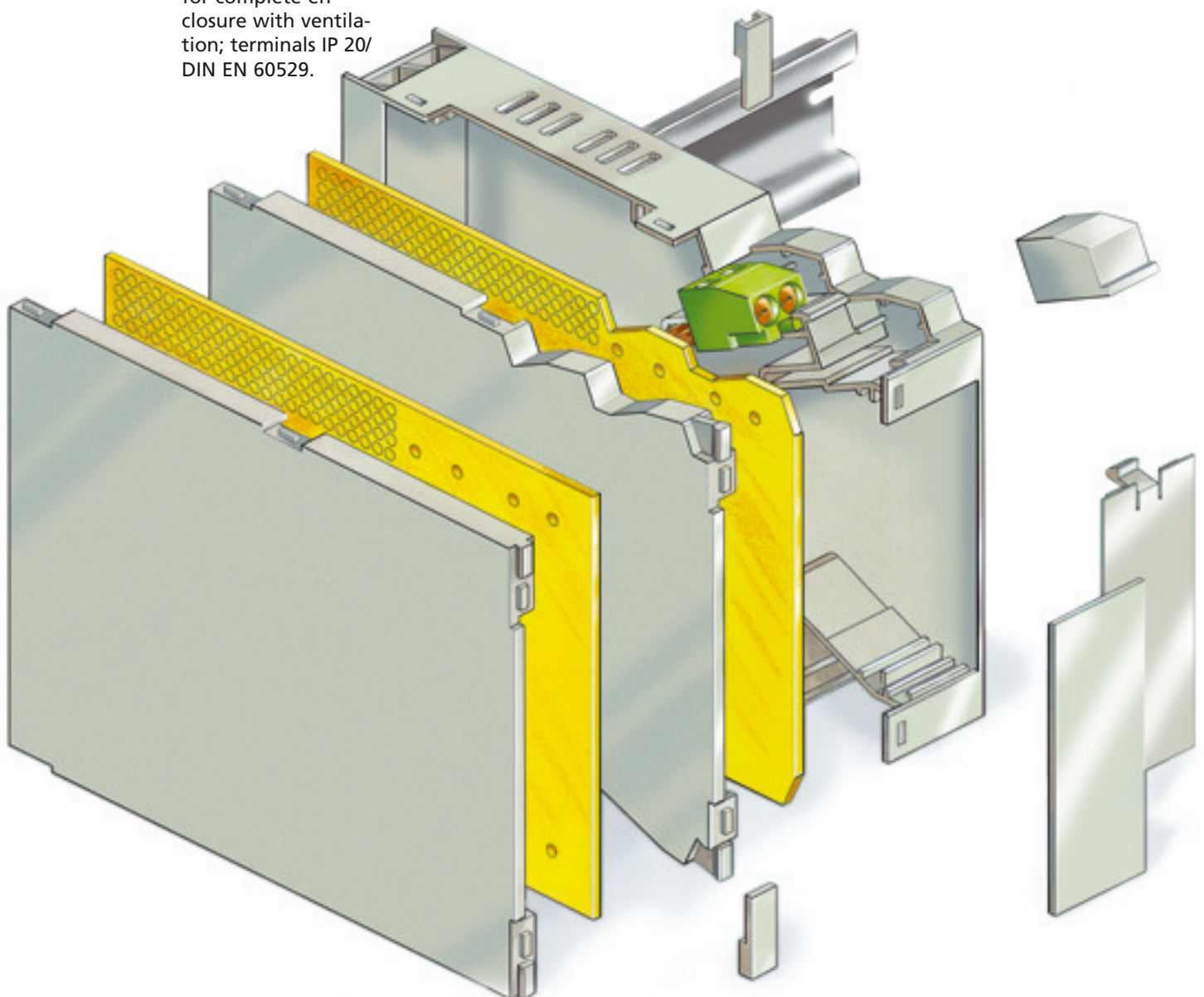
CN-BL: Blind pieces for unused
terminal locations

CN-WA: Wall adapter for wall
mounting

CN-BZ: Marking plate, clip-on
type, without printing

Dimensions

Model	W	L	H	max. terminal assignment
CN 19	19.0	100.8	75	4 x 2 pole
CN 22	22.5	100.8	75	4 x 3 pole
CN 26	26.0	100.8	75	4 x 3 pole



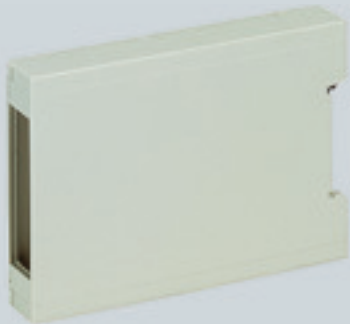


CombiNorm-Compact CN 19 (max. 8-pole)



CN 19 GK-L
with CN-DK

CN 19 GK
with CN-DU



CN 19 GU with CN-DU

The different enclosure combinations using shells and lids offer various advantages:

CN..GK with CN-DK:

This combination requires the PCB to have a stepped profile. Optimal access to the terminals of enclosures which are connected to each other.

CN..GK with CN-DU:

This combination permits the use of a rectangular (grooved) PCB which minimises the production costs.

CN..GU with CN-DU:

Universal enclosure without pre-set terminal positions, permitting the use of larger bus wire connectors parallel to the PCB (upper or lower).

The CN..FP front panels are coded in their direction of insertion. Customer-specific front panels, e.g. made of aluminium, are also available as alternatives.

A PCB plug-in slot for the fitting of – for example – front operating elements is provided parallel to the front panel.

Instead of a front panel, a CN..FK (G) front flap (RAL 7035 or clear) can be snapped in. It can be removed for operation of the rear components.

Enclosure shells

Order designation

Model	Order no.	Description	Enclosure width
CN 19 GK	65019100	Enclosure shell, contoured, for max. 4 x 2-pole terminals	19
CN 19 GK-L	65019110	Enclosure shell, contoured, with air vents for max. 4 x 2-pole terminals	19
CN 19 GU	65019000	Enclosure shell, universal	19
CN 19 GU-L	65019010	Enclosure shell, universal, with air vents (on request)	19

Enclosure lids

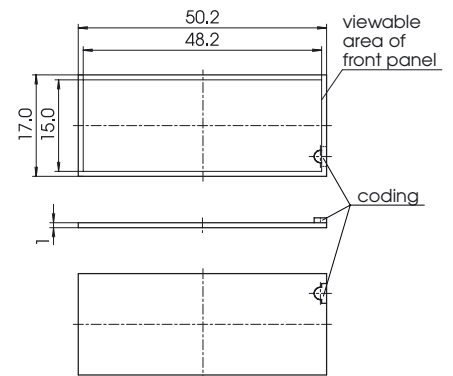
Order designation

Model	Order no.	Description	For enclosure shell
CN-DK	65000200	Enclosure lid, contoured	GK (L)
CN-DU	65000100	Enclosure lid, universal	GK (L), GU (L)

Front panel

Order designation

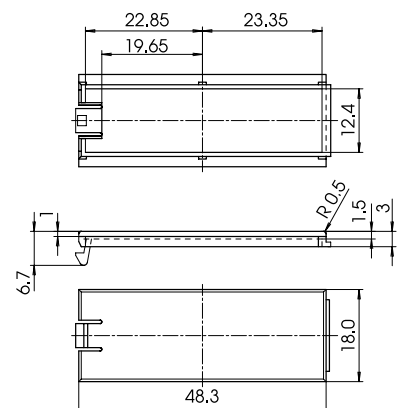
Model	Order no.	Description	For enclosure width
CN 19 FP	65019500	Front panel, plug-in, direction of insertion coded	19



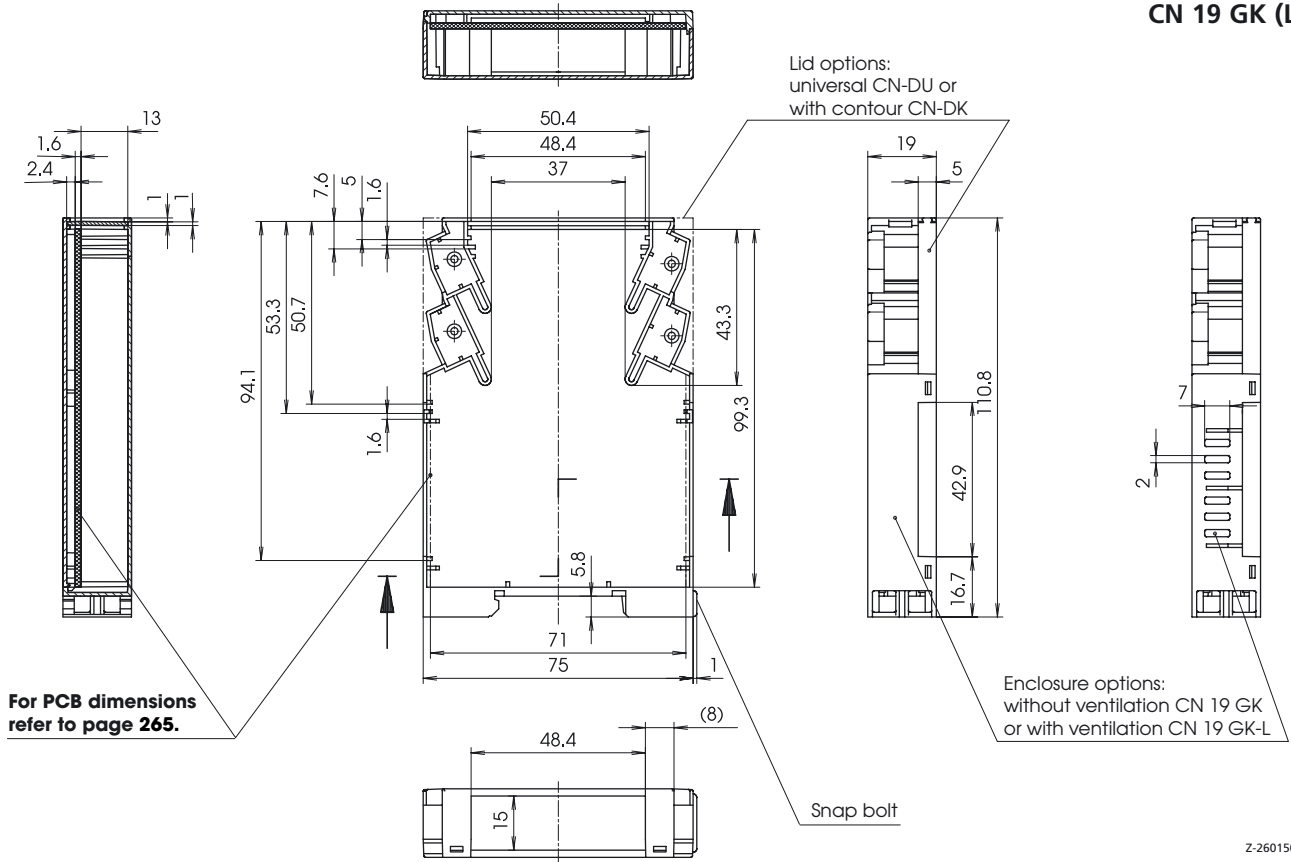
Front flaps

Order designation

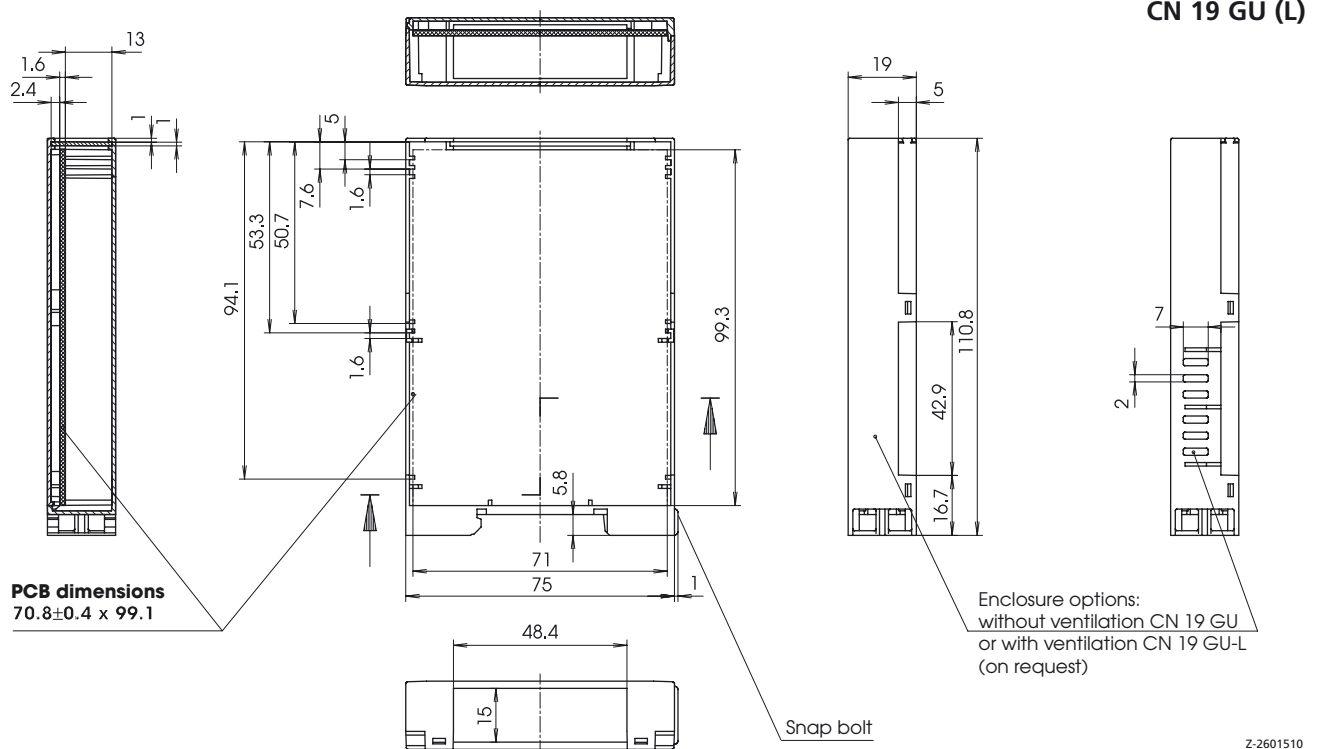
Model	Order no.	Description	For enclosure width
CN 19 FK	65019600	Front flap, snap-on	19
CN 19 FKG	65019700	Front flap, snap-on, clear	19



CN 19 GK (L)



CN 19 GU (L)





CombiNorm-Compact CN 22 (max. 12-pole)



CN 22 GK-L with CN-DK

CN 22 GK with CN-DU



CN 22 GU with CN-DU

The different enclosure combinations using shells and lids offer various advantages:

CN..GK with CN-DK:

This combination requires the PCB to have a stepped profile. Optimal access to the terminals of enclosures which are connected to each other.

CN..GK with CN-DU:

This combination permits the use of a rectangular (grooved) PCB which minimises the production costs.

CN..GU with CN-DU:

Universal enclosure without pre-set terminal positions, permitting the use of larger bus wire connectors parallel to the PCB (upper or lower).

The **CN..FP** front panels are coded in their direction of insertion. Customer-specific front panels, e.g. made of aluminium, are also available as alternatives.

A PCB plug-in slot for the fitting of – for example – front operating elements is provided parallel to the front panel.

Instead of a front panel, a **CN..FK (G) front flap** (RAL 7035 or clear) can be snapped in. It can be removed for operation of the rear components.

Enclosure shells

Order designation

Model	Order no.	Description	Enclosure width
CN 22 GK	65022100	Enclosure shell, contoured, for max. 4 x 3-pole terminals	22.5
CN 22 GK-L	65022110	Enclosure shell, contoured, with air vents for max. 4 x 3-pole terminals	22.5
CN 22 GU	65022000	Enclosure shell, universal	22.5
CN 22 GU-L	65022010	Enclosure shell, universal with air vents (on request)	22.5

Enclosure lids

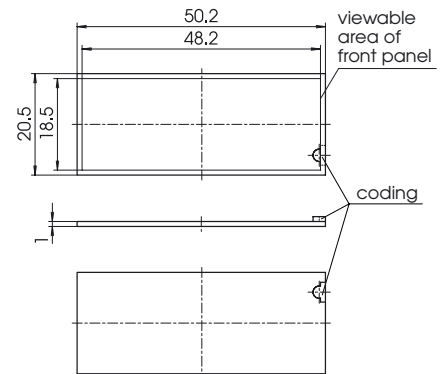
Order designation

Model	Order no.	Description	For enclosure shell
CN-DK	65000200	Enclosure lid, contoured	GK (L)
CN-DU	65000100	Enclosure lid, universal	GK (L), GU (L)

Front panel

Order designation

Model	Order no.	Description	For enclosure width
CN 22 FP	65022500	Front panel, plug-in, direction of insertion coded	22.5

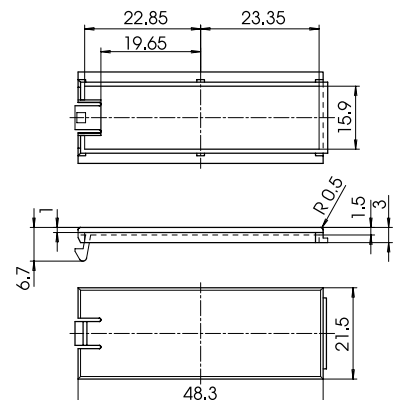


Z-2601585

Front flaps

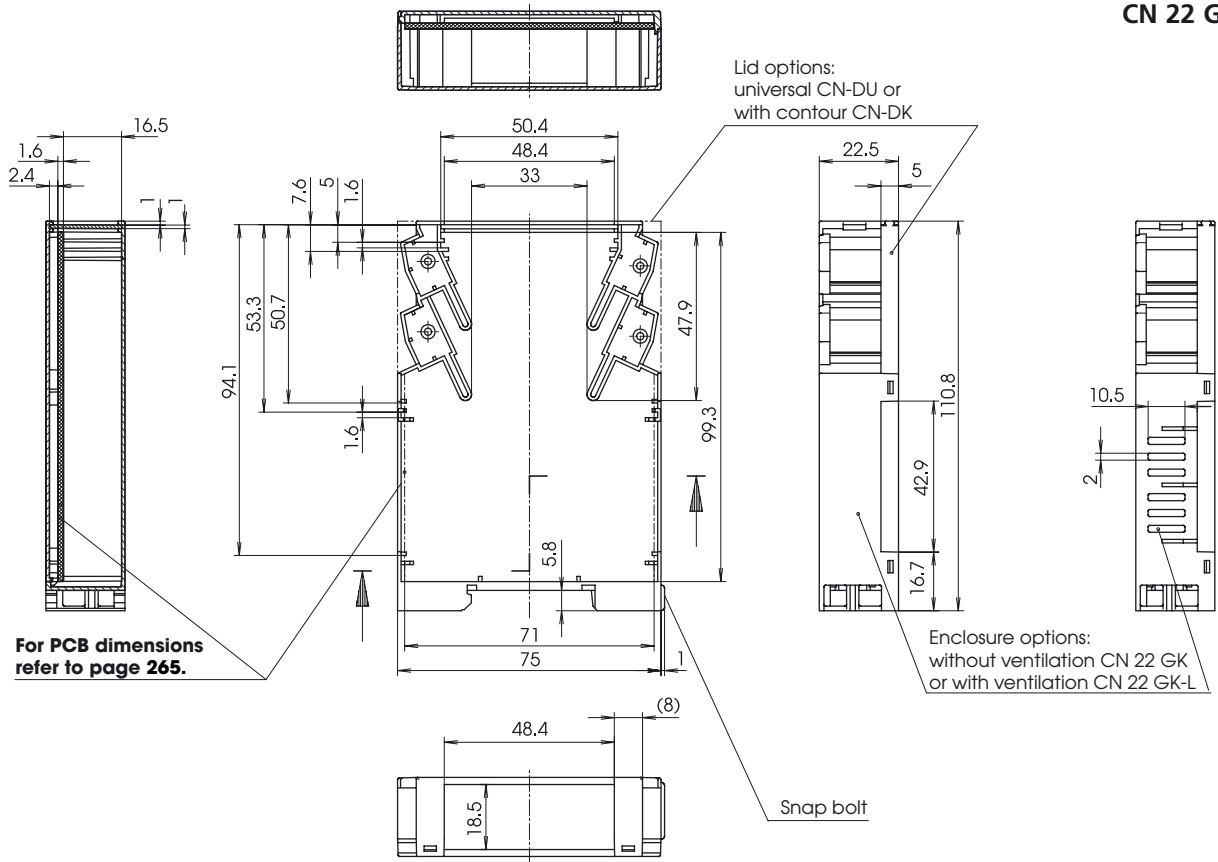
Order designation

Model	Order no.	Description	For enclosure width
CN 22 FK	65022600	Front flap, snap-on	22.5
CN 22 FKG	65022700	Front flap, snap-on, clear	22.5



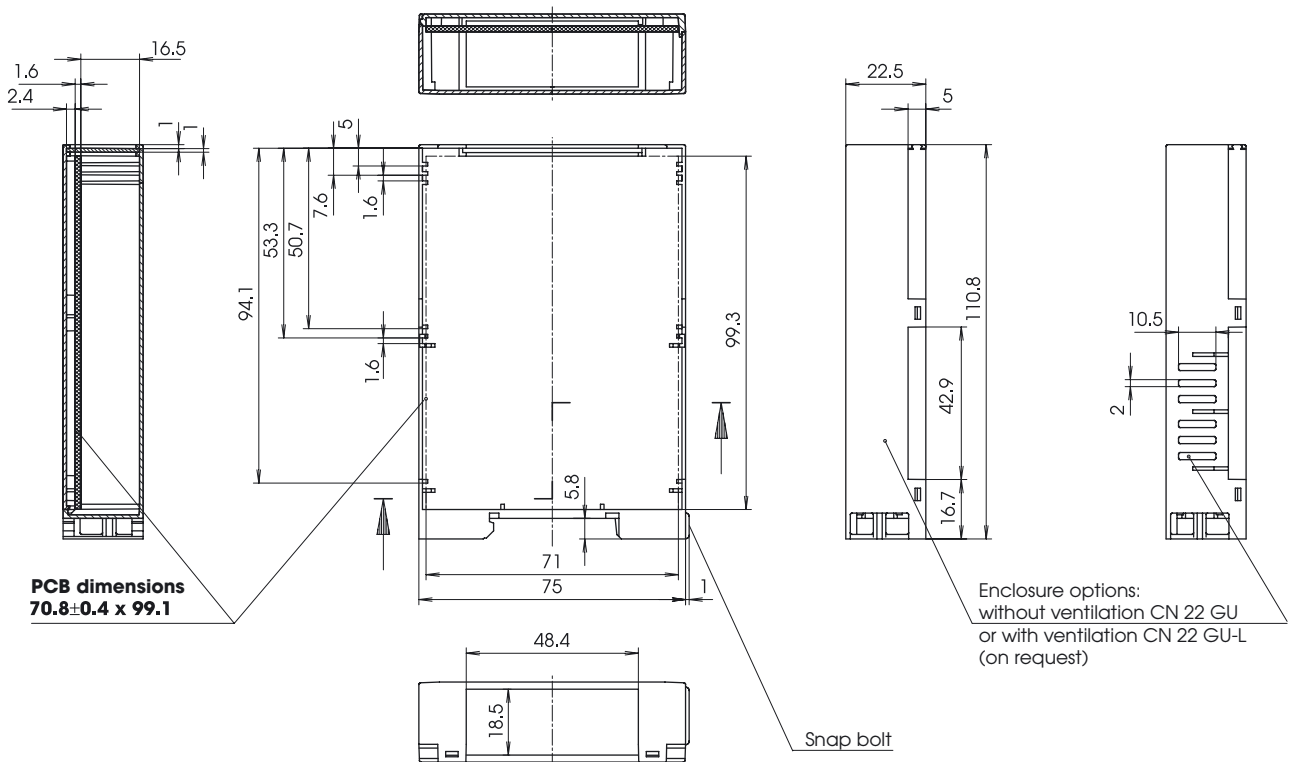
Z-2601537

CN 22 GK (L)



Z-2601511

CN 22 GU (L)



Z-2601512



CombiNorm-Compact CN 26 (max. 12-pole)



CN 26 GK-L with CN-DK

CN 26 GK with CN-DU



CN 26 GU with CN-DU

The different enclosure combinations using shells and lids offer various advantages:

CN..GK with CN-DK:

This combination requires the PCB to have a stepped profile. Optimal access to the terminals of enclosures which are connected to each other.

CN..GK with CN-DU:

This combination permits the use of a rectangular (grooved) PCB which minimises the production costs.

CN..GU with CN-DU:

Universal enclosure without pre-set terminal positions, permitting the use of larger bus wire connectors parallel to the PCB (upper or lower).

The **CN..FP** front panels are coded in their direction of insertion. Customer-specific front panels, e.g. made of aluminium, are also available as alternatives.

A PCB plug-in slot for the fitting of – for example – front operating elements is provided parallel to the front panel. Instead of a front panel, a **CN..FK (G) front flap** (RAL 7035 or clear) can be snapped in. It can be removed for operation of the rear components.

Enclosure shells

Order designation

Model	Order no.	Description	Enclosure width
CN 26 GK	65026100	Enclosure shell, contoured, for max. 4 x 3-pole terminals	26
CN 26 GK-L	65026110	Enclosure shell, contoured, with air vents for max. 4 x 3-pole terminals	26
CN 26 GU	65026000	Enclosure shell, universal	26
CN 26 GU-L	65026010	Enclosure shell, universal with air vents (on request)	26

Enclosure lids

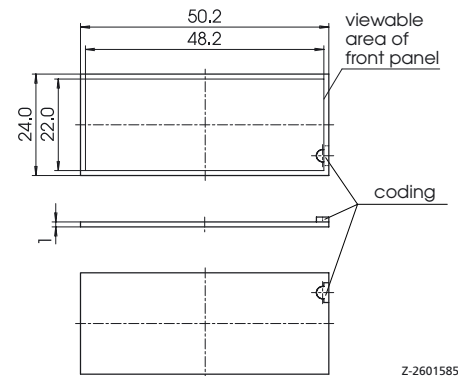
Order designation

Model	Order no.	Description	For enclosure shell
CN-DK	65000200	Enclosure lid, contoured	GK (L)
CN-DU	65000100	Enclosure lid, universal	GK (L), GU (L)

Front panel

Order designation

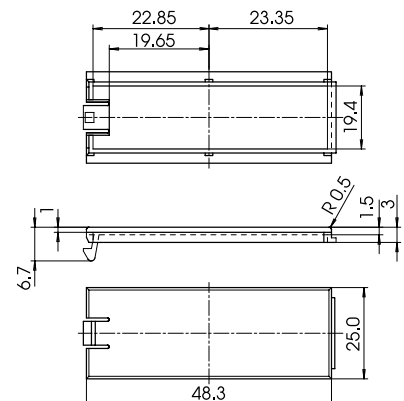
Model	Order no.	Description	For enclosure width
CN 26 FP	65026500	Front panel, plug-in, direction of insertion coded	26



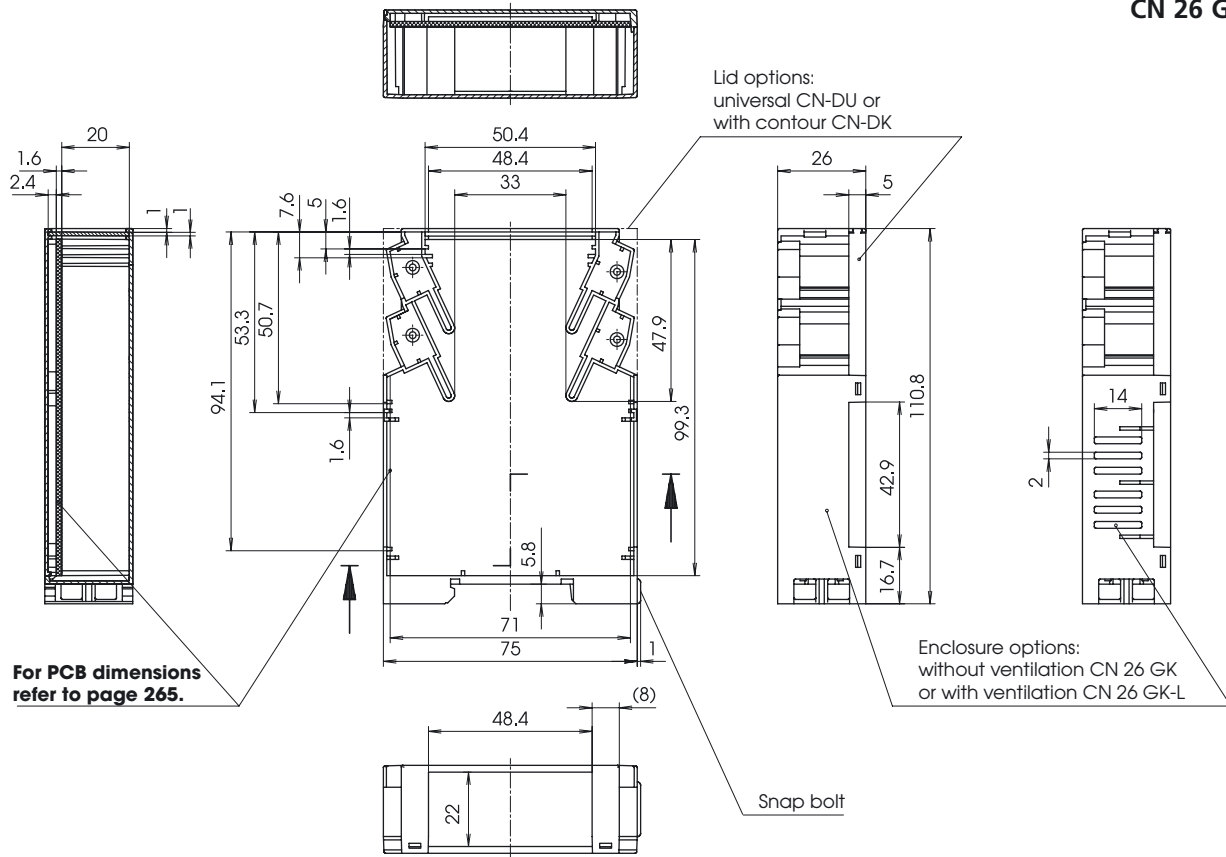
Front flaps

Order designation

Model	Order no.	Description	For enclosure width
CN 26 FK	65026600	Front flap, snap-on	26
CN 26 FKG	65026700	Front flap, snap-on, clear	26

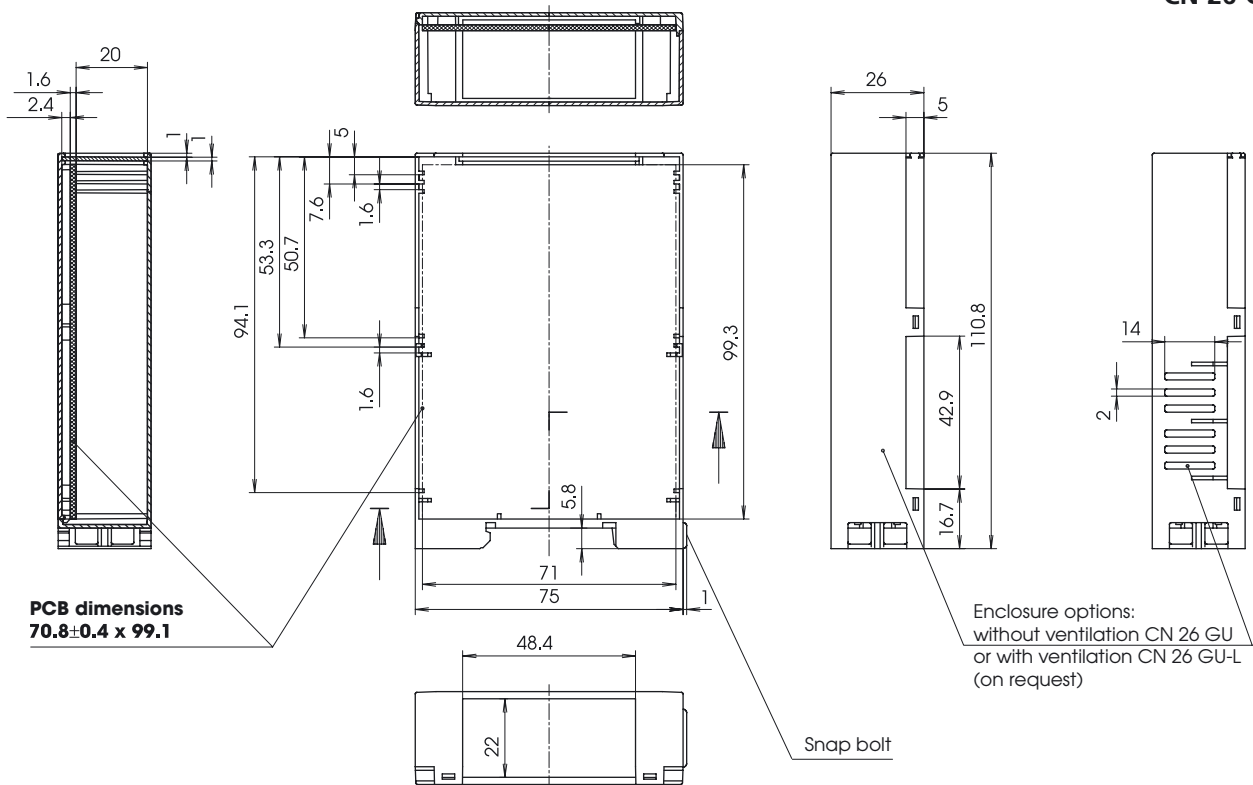


CN 26 GK (L)



Z-2601513

CN 26 GU (L)



Z-2601514

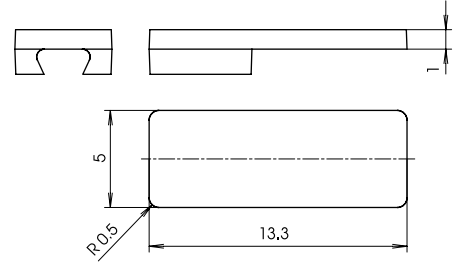
CombiNorm-Compact accessories



Marking plate CN-BZ

Order designation

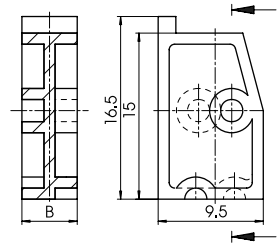
Model	Order no.	Description	For enclosure
CN-BZ	66000022	Marking plate for clipping onto upper and lower section of enclosure front	All designs



Z-2601515

Order designation

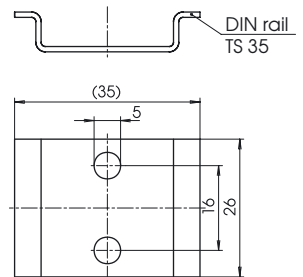
Model	Order no.	Description	B	For enclosure
CN-BL 1	66000032	Blind piece, 1-pole, for unused term. locations	5	CN..GK (L)
CN-BL 2	66000042	Blind piece, 2-pole, for unused term. locations	10	CN..GK (L)



Z-2601538

Order designation

Model	Order no.	Description	For enclosure
CN-WA	66000012	Wall adapter for fitting single enclosures to walls	All designs



Z-1007106

Order designation

Model	Order no.	Description
AK-BS	66000100	Terminal identification strip, self-adhesive



Terminal identification strip AK-BS

9.	10	11	12	13	14	15	16	17	18	19	20	21	22	23	24	25	26	27	28	29	30	31	32	33	34	35	36	37	38	39	40	41	42	43	44								
1	2	3	4	5	6	7	8	9	10	11	12	13	14	15	16	17	18	19	20	21	22	23	24	25	26	27	28	29	30	31	32	33	34	35	36	37	38	39	40	41	42	43	44
1	2	3	4	5	6	7	8	9	10	11	12	13	14	15	16	17	18	19	20	21	22	23	24	25	26	27	28	29	30	31	32	33	34	35	36	37	38	39	40	41	42	43	44

CombiNorm
terminal labels



Z-2601451

Connection terminals

Model	Order no.	Description
AK 8191/2DL	66000052	2-pole, on left of component side (seen from front), PCB vertical
AK 8191/2DR	66000062	2-pole, on right of component side (seen from front), PCB vertical
AK 8191/3DL	66000072	3-pole, on left of component side (seen from front), PCB vertical
AK 8191/3DR	66000082	3-pole, on right of component side (seen from front), PCB vertical

Rated cross-section: 2.5 mm²

Max. connection cross-section:

Single wire (rigid) 0.14 - 4 mm²

Fine-strand (flexible) 0.14 - 2.5 mm²

Rated current: 16 A

Rated voltage according to VDE 110/01.89:

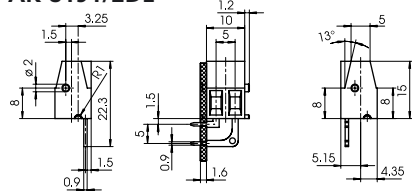
250V/4KV/3 overvoltage category III

* 690V/4KV/2 overvoltage category II

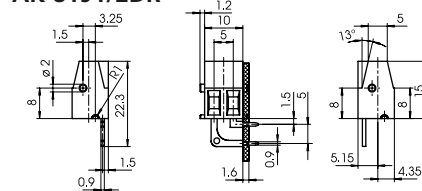
1000 V/4KV/1 overvoltage category I

* max. 600 V for earthed equipment or expected overvoltage

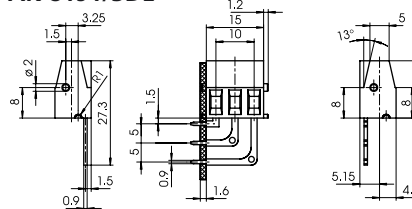
AK 8191/2DL



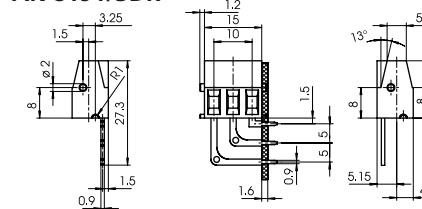
AK 8191/2DR



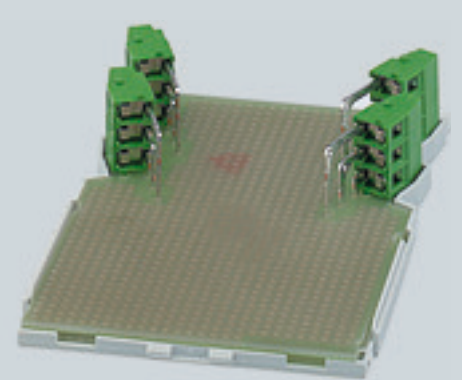
AK 8191/3DL



AK 8191/3DR



Z-2601536



Ingress protection: IP 20

Dimensions:

Pitch dimension 5.0 mm

Drill hole Ø 1.3 mm

Wire stripping l. 6.5 mm

Colour: Green, similar to RAL 6017

Materials:

Insulating mat. PA

Inflammability

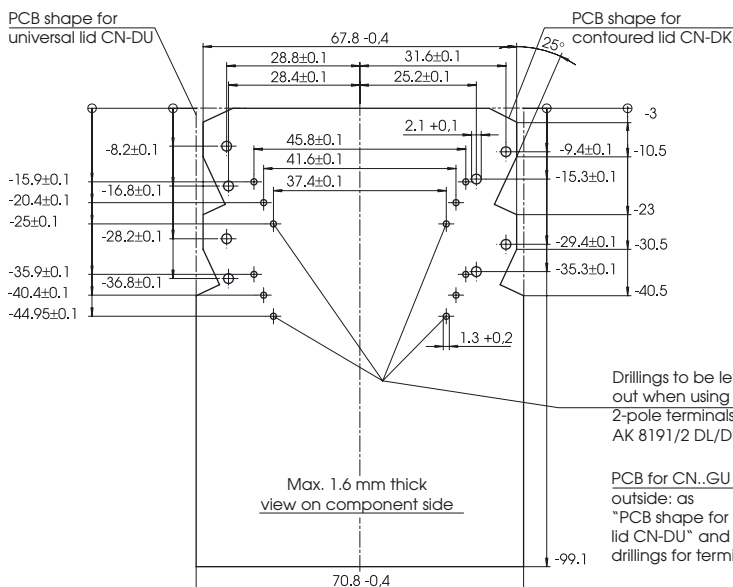
class UL94 V-0

Contact bow tinned ETP copper

Soldering pin tinned ETP copper

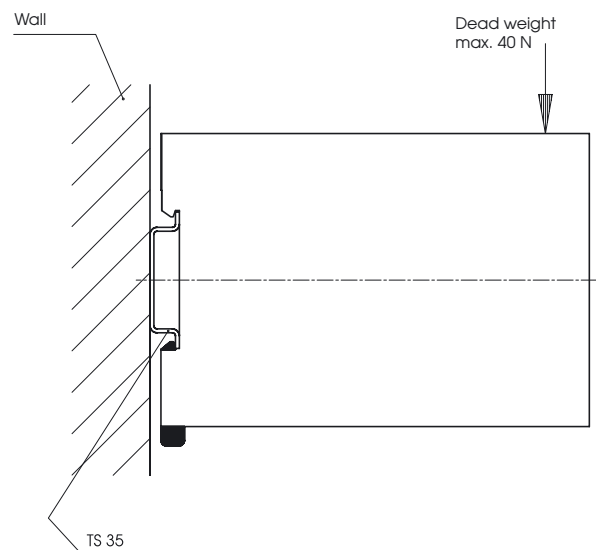
Connection terminals

PCB dimensions for CN..GK with CN..DK or CN..DU



Z-2601522

Load-bearing capacity



Z-2601450